



**QUARTERLY REPORT OF THE
SRI LANKA LABOUR FORCE
SURVEY**

Quarterly Report – 2012

Fourth Quarter

**DEPARTMENT OF CENSUS & STATISTICS
MINISTRY OF FINANCE AND PLANNING**

ISBN 978 – 955 – 577 – 818 – 3

Preface

In the past, information on labour force characteristics, employment and unemployment etc. were collected through labour force and socio - economic surveys conducted at five yearly time intervals. However, the employment and unemployment data are required at very short intervals to monitor the programs made in the employment generating policies of the government. Therefore, to satisfy this need, the Department of Census and Statistics (DCS) designed a labour force survey on a quarterly basis, to measure the levels and trends of employment, unemployment and labour force in Sri Lanka on a continuous basis. This survey was commenced from the first quarter of 1990 and this report is the eighty sixth in the series of quarterly reports published so far.

Current survey concepts and methods are very similar to those introduced at the beginning of the survey in 1990. However, some changes were made over the years to improve the accuracy and usefulness of the data. The significant revisions were made on the labour force survey questionnaire in 2006, and the revised version was introduced for the survey conducted in 2006 first quarter, and it has been using up to now.

The field work of the survey for the fourth quarter 2012 was done in October, November and December in year 2012. This survey covered the whole country. However, for comparison purposes related tabulations have been done (i) excluding Northern and Eastern provinces and (ii) excluding Northern province, separately in this report. A nationally representative annual sample of about 19,420 housing units have been selected for the survey in 2012. This report is based on a quarterly sample of 6,410 housing units.

D.C.A. Gunawardena
Director General of Census & Statistics

Department of Census & Statistics,
109, Rotunda Tower,
Galle Road.
Colombo 03.
21.05.2013.

Acknowledgements

This report is eighty sixth in the series of the Quarterly Labour Force Survey which was commenced from the first quarter 1990 and is being continued by the Department of the Census and statistics.

Planning and execution of the survey was done by staff of the Sample Survey Division under the direction of Mr. W.W.M.A.S. Premakumara, Director, Sample Surveys Division and the survey activities were coordinated by Mr. G.Y.L. Fernando, Additional Director General (2). Field operation activities were organized by Mr. D.C.A.Fernando, Statistician of the Sample Surveys Division.

The supervision activities were carried out by Mr. P.A.Subawickrama, Mr. D.C.A.Fernando, Mrs. W.A.C.Wijebandara, Mrs. M.D.D.D.Deepawansa, Mr. H.T.Fonseka Mr.U.B.Saputhanthiri, Mr. S.M.M. Badudeen, Statisticians & Mr.J.S.N.P.Dharmawardana, Miss.C.Jayawickrama, Senior Statisticians, of the sample surveys division and Heads of statistics divisions in each district.

The computer data processing and final tabulations were done by Mrs. W.A.S.M.P. Gunasekara, Mr.T. Thirugnanatheepan Statistical Officers and Mr. M.B.M. Shiras, Statistical Assistant of the Sample Surveys Division, under the supervision of Mr. P.A. Subawickrama, Statistician using Microcomputers.

Developing of sample selection programme and it's related computer software was done by Mr. K.M.R. Wickramasinghe, AD(ICT) of the sample survey division.

This publication was organized and prepared by Mrs. W.A.C. Wijebandara, Statistician Sample Surveys Division, assisted by Mrs. W.A.S.M.P. Gunasekara, Statistical officer.

The Information & Communication Technology Division, under the direction of Mr. S.A.S. Bandulasena, Director (Data Processing) and under the supervision of Mr. P.M.R.Fernando DD(ICT) and Mr. W.H.P.N. Weerasiri, SLICTS I/II , was responsible for the survey data entry and preparation of data entry and computer edits programmes.

Data entry was decentralized and manual editing, coding & data entry were done by responsible officers at district office kacheries in all districts other than Hambantota.

District field staff of the Department who worked on the survey deserve a special word of thanks. They include District Deputy Directors/ Senior Statisticians/ Statisticians and field Statistical Officers, who worked hard at the data collection stage, to make this survey a success. Printing of the report was done at the staff of Printing Division, under the supervision of Mr. W.C. Weerawansa, Senior Statistician.

Finally, I wish to express my appreciation to all the respondents of the survey for their valuable cooperation.

Sri Lanka Labour Force Survey
Summary Statistics on Labour Force Characteristics
2012 4th Quarter
(All Island)

10 years & over population

	Total	Male	Female	Urban	Rural
Population (10 years & over)	18,123,364	8,554,616	9,568,748	3,212,899	14,910,465
Labour force in this age group	8,715,983	5,781,277	2,934,706	1,391,853	7,324,130
Labour force participation rate	48.1	67.6	30.7	43.3	49.1
Employed population	8,375,009	5,624,370	2,750,639	1,345,020	7,029,989
Employment rate	96.1	97.3	93.7	96.6	96.0
Unemployed population	340,974	156,907	184,068	46,833	294,142
Unemployment rate	3.9	2.7	6.3	3.4	4.0
Not in labour force	9,407,381	2,773,339	6,634,042	1,821,046	7,586,334

15 years & over population

	Total	Male	Female	Urban	Rural
Population (15 years & over)	16,259,623	7,613,576	8,646,048	2,883,819	13,375,804
Labour force in this age group	8,706,049	5,772,358	2,933,691	1,389,913	7,316,136
Labour force participation rate	53.5	75.8	33.9	48.2	54.7
Employed population	8,365,075	5,615,452	2,749,623	1,343,081	7,021,994
Employment rate	96.1	97.3	93.7	96.6	96.0
Unemployed population	340,974	156,907	184,068	46,833	294,142
Unemployment rate	3.9	2.7	6.3	3.4	4.0
Not in labour force	7,553,574	1,841,217	5,712,357	1,493,906	6,059,668

20 years & over population

	Total	Male	Female	Urban	Rural
Population (20 years & over)	14,536,776	6,765,549	7,771,227	2,541,607	11,995,168
Labour force in this age group	8,445,317	5,587,949	2,857,367	1,361,002	7,084,315
Labour force participation rate	58.1	82.6	36.8	53.5	59.1
Employed population	8,154,466	5,465,520	2,688,946	1,322,215	6,832,252
Employment rate	96.6	97.8	94.1	97.2	96.4
Unemployed population	290,850	122,429	168,421	38,787	252,063
Unemployment rate	3.4	2.2	5.9	2.8	3.6
Not in labour force	6,091,459	1,177,600	4,913,860	1,180,606	4,910,854

Selected Labour Force indicators (Excluding Northern & Eastern provinces)
(2003 - 2012 Q4)

	year									
	2005	2006	2007	2008	2009	2010	2011	2012Q2	2012Q3	2012Q4
Labour force participation rate										
<i>by sex</i>										
Both sexes	49.3	51.2	49.8	50.2	49.2	48.6	48.8	47.2	48.1	49.3
Male	67.3	68.1	67.8	67.9	66.7	67.3	66.7	66.7	66.7	68.3
Female	32.6	35.7	33.4	34.3	33.7	32.1	32.8	29.8	31.6	32.3
<i>by residential sector</i>										
Total	49.3	51.2	49.8	50.2	49.2	48.6	48.8	47.2	48.1	49.3
Urban	46.2	45.3	45.0	46.3	43.9	42.5	44.7	44.6	45.0	44.0
Rural	49.7	52.1	50.4	50.7	49.8	49.5	49.4	47.8	48.8	50.4
Unemployment rate										
<i>by sex</i>										
Both sexes	7.2	6.5	6.0	5.2	5.7	4.9	4.0	3.8	3.9	3.8
Male	5.3	4.7	4.3	3.6	4.3	3.5	2.7	3.0	2.8	2.7
Female	10.7	9.7	9.0	8.0	8.2	7.5	6.3	5.4	5.9	5.9
<i>by selected age groups(yr)</i>										
20 - 29	16.0	15.9	15.0	13.2	15.1	13.7	11.8	11.9	10.6	10.1
20 - 24	22.4	21.0	21.1	17.8	21.0	18.9	17.5	17.2	14.7	16.0
25 - 29	9.4	11.0	9.4	9.0	10.1	9.1	7.0	7.2	7.2	4.9
<i>by selected educational levels</i>										
G.C.E.(A/L) & above										
Both sexes	12.2	11.6	11.8	9.9	10.8	11.3	8.4	8.4	6.0	6.8
Male	7.9	6.9	6.6	5.6	6.6	7.5	5.1	5.2	4.1	2.9
Female	17.1	16.8	17.5	14.4	15.1	15.6	12.1	11.4	8.0	11.4
Employed population										
<i>by sex</i>										
Both sexes	6,788,119	7,105,322	7,041,874	7,174,706	7,139,537	7,235,641	7,429,794	7,120,518	7,304,238	7,579,136
Male	4,546,397	4,610,643	4,653,067	4,663,277	4,609,198	4,770,376	4,855,242	4,780,209	4,815,934	5,007,780
Female	2,241,722	2,494,679	2,388,807	2,511,429	2,530,339	2,465,265	2,574,552	2,340,309	2,488,304	2,571,356
<i>by industry (percentage)</i>										
Total	6,788,119	7,105,322	7,041,874	7,174,706	7,139,537	7,235,641	7,429,794	7,120,518	7,304,238	7,579,136
%	(100.0)	(100.0)	(100.0)	(100.0)	(100.0)	(100.0)	(100.0)	(100.0)	(100.0)	(100.0)
Agriculture	2,059,293	2,287,268	2,202,098	2,344,415	2,318,621	2,353,599	2,445,251	2,120,992	2,246,539	2,393,634
%	(30.3)	(32.2)	(31.3)	(32.7)	(32.5)	(32.5)	(32.9)	(29.8)	(30.8)	(31.6)
Industry	1,787,274	1,889,953	1,873,857	1,888,004	1,822,685	1,777,130	1,841,444	1,963,537	1,881,883	2,014,404
%	(26.3)	(26.6)	(26.6)	(26.3)	(25.5)	(24.6)	(24.8)	(27.6)	(25.8)	(26.6)
Services	2,941,552	2,928,101	2,965,919	2,942,288	2,998,231	3,104,913	3,143,100	3,035,990	3,175,816	3,171,099
%	(43.3)	(41.2)	(42.1)	(41.0)	(42.0)	(42.9)	(42.3)	(42.6)	(43.5)	(41.8)
<i>by no. of hours worked per week (percentage)</i>										
Total	100.0	100.0	100.0	100.0	100.0	100.0	100.0	100.0	100.0	100.0
0 •	4.9	6.7	6.5	7.4	7.9	6.1	5.2	3.7	5.8	4.3
1 - 9	1.6	1.9	1.5	2.2	2.4	1.8	1.8	1.0	1.2	1.4
10 - 39	27.9	28.6	28.3	29.2	29.0	28.6	30.1	27.6	24.3	25.6
40+	65.7	62.8	63.7	61.2	60.8	63.5	62.8	67.6	68.7	68.7

• Has a job but not at work during the reference week

Selected Labour Force indicators

(2003 - 2012 Q4)

	year										
	2005 ³	2006 ¹	2007 ¹	2008 ²	2009 ²	2010 ²	2011 ²	2011 ³	2012 Q2 ³	2012 Q3 ³	2012 Q4 ³
Labour force participation rate											
<i>by sex</i>											
Both sexes	48.3	51.2	49.8	49.5	48.7	48.1	48.2	47.8	46.4	47.2	48.1
Male	67.1	68.1	67.8	67.8	66.6	67.1	66.5	66.2	66.5	66.2	67.6
Female	30.9	35.7	33.4	33.2	32.8	31.2	31.8	31.2	28.6	30.3	30.7
<i>by residential sector</i>											
Total	48.3	51.2	49.8	49.5	48.7	48.1	48.2	47.8	46.4	47.2	48.1
Urban	45.5	45.3	45.0	45.9	43.5	42.0	44.0	43.4	43.7	44.0	43.3
Rural	48.7	52.1	50.4	50.0	49.4	49.0	48.8	48.4	47.0	47.9	49.1
Unemployment rate											
<i>by sex</i>											
Both sexes	7.7	6.5	6.0	5.4	5.8	4.9	4.2	4.2	3.9	4.1	3.9
Male	5.5	4.7	4.3	3.7	4.3	3.5	2.7	2.7	3.0	2.8	2.7
Female	11.9	9.7	9.0	8.4	8.6	7.7	6.8	7.0	5.9	6.5	6.3
<i>by selected age groups(yr)</i>											
20 - 29	17.2	15.9	15.0	13.7	15.4	13.8	12.4	12.3	12.3	11.2	10.5
20 - 24	24.6	21.0	21.1	18.1	21.4	19.1	18.0	17.7	17.6	15.9	16.8
25 - 29	9.5	11.0	9.4	9.5	10.3	9.2	7.5	7.6	7.7	7.4	4.9
<i>by selected educational levels</i>											
G.C.E.(A/L) & above											
Both sexes	13.8	11.6	11.8	10.5	11.2	11.6	9.0	9.0	8.6	7.1	7.1
Male	8.9	6.9	6.6	6.0	7.0	7.9	5.4	5.4	5.5	4.9	3.5
Female	19.1	16.8	17.5	15.3	15.5	15.8	13.1	13.1	11.7	9.3	11.4
Employed population											
<i>by sex</i>											
Both sexes	7,518,007	7,105,322	7,041,874	7,648,305	7,602,414	7,706,593	7,894,439	8,196,927	7,936,294	8,074,808	8,375,009
Male	5,134,765	4,610,643	4,653,067	5,033,449	4,963,176	5,131,986	5,227,317	5,460,328	5,410,758	5,396,138	5,624,370
Female	2,383,241	2,494,679	2,388,807	2,614,856	2,639,238	2,574,608	2,667,123	2,736,599	2,525,535	2,678,670	2,750,639
<i>by industry (percentage)</i>											
Total	7,518,007	7,105,322	7,041,874	7,648,305	7,602,414	7,706,593	7,894,439	8,196,927	7,936,294	8,074,808	8,375,009
%	(100.0)	(100.0)	(100.0)	(100.0)	(100.0)	(100.0)	(100.0)	(100.0)	(100.0)	(100.0)	(100.0)
Agriculture	2,306,039	2,287,268	2,202,098	2,489,731	2,475,921	2,519,905	2,601,824	2,708,020	2,377,937	2,495,859	2,684,018
%	(30.7)	(32.2)	(31.3)	(32.6)	(32.6)	(32.7)	(33.0)	(33.0)	(30.0)	(30.9)	(32.0)
Industry	1,928,014	1,889,953	1,873,857	2,004,880	1,910,318	1,866,733	1,915,022	1,977,063	2,127,622	2,054,953	2,174,557
%	(25.6)	(26.6)	(26.6)	(26.2)	(25.1)	(24.2)	(24.3)	(24.1)	(26.8)	(25.4)	(26.0)
Services	3,283,954	2,928,101	2,965,919	3,153,693	3,216,175	3,319,955	3,377,593	3,511,844	3,430,734	3,523,996	3,516,434
%	(43.7)	(41.2)	(42.1)	(41.2)	(42.3)	(43.1)	(42.8)	(42.8)	(43.2)	(43.6)	(42.0)
<i>by no. of hours worked per week (percentage)</i>											
Total	100.0	100.0	100.0	100.0	100.0	100.0	100.0	100.0	100.0	100.0	100.0
0 •	4.7	6.7	6.5	7.2	7.9	6.0	5.3	5.2	3.5	5.7	4.4
1 - 9	1.5	1.9	1.5	2.2	2.3	1.7	1.8	1.7	1.1	1.2	1.3
10 - 39	27.6	28.6	28.3	28.9	28.8	28.5	29.7	30.0	27.7	24.6	26.0
40+	66.2	62.8	63.7	61.7	61.0	63.9	63.2	63.0	67.8	68.5	68.3

• Has a job but not at work during the reference week

¹ - Excluding Northern & Eastern provinces

³ - All the districts are included

² - Including Eastern province but Excluding Northern province

CONTENTS

	Page No.
WORKING AGE POPULATION	1
EMPLOYED POPULATION	2
UNEMPLOYED POPULATION	3
 TABLES	
Table No.	
1. Historical table of Labour Force Status (current) of the Household Population, 10 years of Age and over - Both Sexes	4
1A. Historical table of Labour Force Status (current) of the Household Population, 10 years of Age and over - Male	5
1B. Historical table of Labour Force Status (current) of the Household Population, 10 years of Age and over - Female	6
2. Labour Force Status (current) of the Household Population 10 years of Age and over, by Age - Both Sexes	7
2A. Labour Force Status (current) of the Household Population 10 years of Age and over, by Age - Male	8
2B. Labour Force Status (current) of the Household Population 10 years of Age and over, by Age - Female	8
3. Historical table of Currently Employed persons by Age Groups (percentage) - Both Sexes	9
3A. Historical table of Currently Employed persons by Age Groups (percentage) - Male	10
3B. Historical table of Currently Employed persons by Age Groups (percentage) - Female	10
4. Historical table of Currently Employed persons by Level of Education (percentage) - Both Sexes	11
4A. Historical table of Currently Employed persons by Level of Education (percentage) - Male	12
4B. Historical table of Currently Employed persons by Level of Education (percentage) - Female	12
5. Historical table of Currently Employed persons by Employment Status (percentage) - Both Sexes	13
5A. Historical table of Currently Employed persons by Employment Status (percentage) - Male	14
5B. Historical table of Currently Employed persons by Employment Status (percentage) - Female	14
6. Currently employed persons by Industry group (Based on ISIC third revision) - Both sexes	15
6A. Currently employed persons by Industry group (Based on ISIC third revision) - Male	16
6B. Currently employed persons by Industry group (Based on ISIC third revision) - Female	17
6C. Historical table of currently employed population by major industry group - Both sexes	18
6D. Historical table of currently employed population by major industry group (percentage) - Both sexes	18
7. Currently employed persons by Occupation group (Based on ISCO 88) - Both sexes	19
7A. Currently employed persons by Occupation group (Based on ISCO 88) - Male	20
7B. Currently employed persons by Occupation group (Based on ISCO 88) - Female	21
8. Currently Employed persons by hours per week actually worked at the main job and Major Industrial group (percentage) - Both Sexes	22
9. Historical table of Currently Unemployed persons by Age Groups (percentage) - Both Sexes	23
9A. Historical table of Currently Unemployed persons by Age Groups (percentage) - Male	24
9B. Historical table of Currently Unemployed persons by Age Groups (percentage) - Female	24
10. Historical table of Currently Unemployed persons by Level of Education (percentage) - Both Sexes	25
10A. Historical table of Currently Unemployed persons by Level of Education (percentage) - Male	26
10B. Historical table of Currently Unemployed persons by Level of Education (percentage) - Female	26
11. Currently Unemployed Persons by Sex and Duration of Unemployment	27
12. Standard error and coefficient of variation of selected variables	28
 <i>Appendix 1: Explanatory Notes</i>	
<i>Appendix 2: Alternative estimates of employment, unemployment and labour force characteristics</i>	
<i>Appendix 3: Survey schedule</i>	

Introduction

Sri Lanka Labour Force Survey is designed to measure the levels and trends of employment, unemployment and labour force in Sri Lanka. This survey is being conducted quarterly, since the first quarter of 1990.

The field work of the survey for the Fourth quarter 2012 was done in October, November and December in year 2012. This bulletin consists of summery statistics covering the whole country.

Labour force participation rate

Labour Force: Number of persons (age 10 & above) who were employed or unemployed during the reference week

Labour force participation rate: Labour force expressed as a percentage of population age 10 yr. & over

Table 1: Economically active population by sex and sector - Fourth Quarter 2012

Sector	Economically active population					
	Total	%	Male	%	Female	%
Total	8,715,983	100.0	5,781,277	66.3	2,934,706	33.7
Urban	1,391,853	100.0	946,599	68.0	445,254	32.0
Rural	6,846,775	100.0	4,555,937	66.5	2,290,839	33.5
Estate	477,355	100.0	278,741	58.4	198,613	41.6

Table 2: Economically Inactive population by sex and sector - Fourth Quarter 2012

Sector	Economically inactive population					
	Total	%	Male	%	Female	%
Total	9,407,380	100.0	2,773,338	29.5	6,634,042	70.5
Urban	1,821,046	100.0	533,601	29.3	1,287,445	70.7
Rural	7,235,249	100.0	2,125,730	29.4	5,109,519	70.6
Estate	351,085	100.0	114,007	32.5	237,078	67.5

The survey results revealed that (Table 1), the estimated economically active population (or labour force) was about 8.7 million in Fourth Quarter 2012. Of which 66.3 percent were males and 33.7 percent were females. Out of the economically inactive population 29.5 percent were males and 70.5 percent were females (Table 2) .

Figure 1: Distribution of Economically active/Inactive population

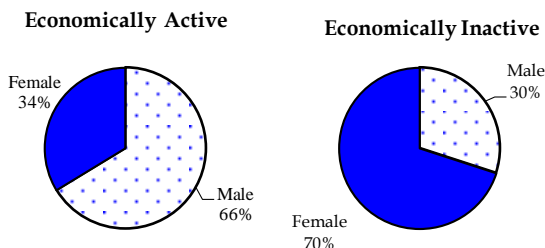


Table 3: Labour Force Participation Rate by sex & year

Year	Labour force participation rate		
	Total	Male	Female
2008	49.5	67.8	33.2
2009	48.7	66.6	32.8
2010	48.1	67.1	31.2
2011	48.2	66.5	31.8
2012Q2	46.8	66.7	29.0
2012Q3	47.5	66.5	30.7
2012Q4	48.6	67.9	31.3

Note: Excluding Northern province

Table 3 provides the information on labour force participation rates since year 2000. As can be seen from this table, male participation rate for the Fourth Quarter 2012 was about 67.9 percent and it was 31.3 percent for females. It is important to note that, male participation to the labour force was almost twice as that of females.

Table 4: Labour Force Participation Rate by age group & by sex - Fourth Quarter 2012

Age group	Sex		
	Total	Male	Female
Total	48.1	67.6	30.7
15 - 19	15.1	21.7	8.7
20 - 24	57.2	76.1	40.8
25 - 29	67.0	94.4	40.7
30 - 34	64.6	95.0	39.4
35 - 39	67.0	95.9	42.7
40 - 44	70.3	96.2	47.8
45 - 49	70.5	95.8	48.2
50 - 54	66.0	90.7	44.3
55 - 59	59.5	81.7	38.5
60+	28.9	47.9	13.1

The distribution of labour force participation rate by age group and by sex depicts more male participation compared to female in all age groups.

Highest male participation rate was reported from age group (40 - 44) yrs, while in female highest participation rate was reported from age group (45 - 49) yrs.

Employment

Employed: Persons who are engaged in some kind of work for pay or profit or family gain during the reference week.

Table 5 : Distribution of Employed population by main industry, (Second Quarter 2011 – Fourth Quarter 2012)

Year	Total	Major industry group		
		Agriculture	Industries	Services
April-May-June 2011 Q2	7,956,518 100.0	2,684,299 33.7	1,877,724 23.6	3,394,495 42.7
July-Aug-Sept. 2011 Q3	7,943,295 100.0	2,609,757 32.9	1,916,181 24.1	3,417,357 43.0
April-May-June 2012 Q2	7,609,654 100.0	2,288,487 30.1	2,049,269 26.9	3,271,898 43.0
July-Aug-Sept. 2012 Q3	7,746,663 100.0	2,391,021 30.9	1,978,624 25.5	3,377,016 43.6
Oct-Nov-Dec 2012 Q4	8,049,420 100.0	2,573,487 32.0	2,103,536 26.1	3,372,397 41.9

Note:

* *Excluding Northern province*

* *Survey was not conducted in the fourth quarter 2011 & first quarter 2012 due to activities of population census.*

* *The tabulation groups based on ISIC (Rev.3) are indicated as A,B,C.....Q..*

Agriculture

1. Agriculture (A)
2. Forestry and Fishery (B)

Industries

1. Manufacturing (D)
2. Construction (F)
3. Mining & Quarrying (C)

Services

1. Wholesale and Retail Trade, Repair of Motor Vehicles, Motorcycles and Personal and Household Goods (G)
2. Hotels and Restaurants (H)
3. Transport, Storage and Communication (I)
4. Financial Intermediation and Real Estate, Renting and Business Activities (J,K)
5. Public Administration and Defence, Compulsory Social Security (L)
6. Education (M)
7. Health and Social work (N)
8. Other Community, Social and Personal Service Activities (O)
9. Private Households with Employed Persons (P)
10. Miscellaneous Labour work
11. Extra Territorial Organizations & bodies (Q)
12. Industries not adequately described

Table 5 shows the percentage distribution of employed population by main industry from Second Quarter 2011 to Fourth Quarter 2012. The total number of employed persons in Sri Lanka was estimated as about 8.4 million in Fourth Quarter 2012. Of which, about 42.0 percent engaged in services sector, 32.0 percent in agriculture sector, and 26.0 percent in Industries sector.

Table 6 : Percentage distribution of employed population by employment status and Agriculture/ Non-Agriculture sector – Fourth Quarter 2012

Employment Status	Total		Sector			
			Agriculture		Non Agriculture	
	No.	%	No.	%	No.	%
Total	8,375,009	100.0	2,684,019	32.0	5,690,990	68.0
Employee	4,735,720	100.0	852,555	18.0	3,883,165	82.0
Public	1,347,618	100.0	170,062	12.6	1,177,556	87.4
Private	3,388,102	100.0	682,493	20.1	2,705,609	79.9
Employer	254,457	100.0	33,952	13.3	220,505	86.7
Own account worker	2,628,017	100.0	1,244,311	47.35	1,383,706	52.7
Contributing family worker	756,815	100.0	553,201	73.1	203,614	26.9

Table 6 shows that, comparatively higher percentage of employees both in private & public sector engage in non-agricultural activities. Also more employers were in non agriculture sector than in agriculture sector. But contributing family workers were more concentrated in agriculture sector.

Table 7 : Distribution of Employed population by main industry & sex – Fourth Quarter 2012

Major industry group	Total	Sex	
		Male	Female
Total	100.0	100.0	100.0
Agriculture	32.0	30.5	35.1
Industry	26.0	26.0	25.8
Services	42.0	43.4	39.0

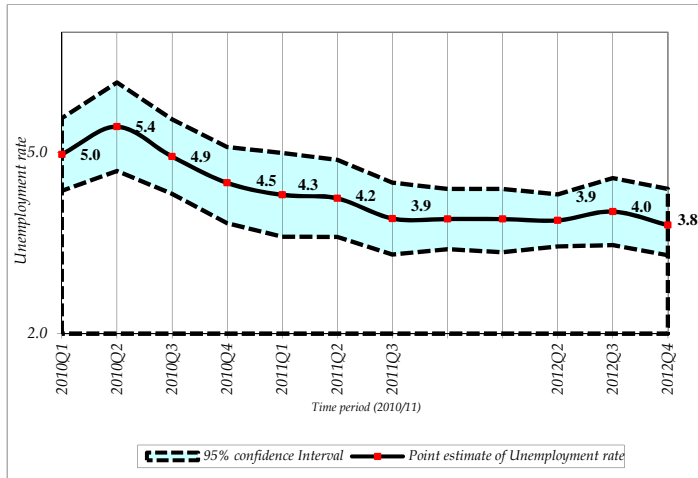
Table 7 depicts the distribution of male and female employed population by main industries. Regardless of sex, highest employment concentrated in service sector. Further among employed women about 35.1 percent was in agriculture sector while this share was 30.5 percent among males.

Unemployment

Unemployment Rate : The number of unemployed persons as a percentage of the labour force

Unemployed : Persons who are seeking and available for work, but had no employment during the reference period

Figure 2 : Unemployment rates and it's 95% confidence intervals (2010 Q2 - 2012 Q4) - Excluding Northern Province



Note:

•Survey was not conducted in the fourth quarter 2011 & first quarter 2012 due to activities of population census.

The number of unemployed persons was estimated as about 336,002 during the Fourth quarter 2012.

The unemployment rate for the Fourth quarter 2012 was reported as 3.9 percent.

Table 8: Unemployment rate by level of education - Fourth Quarter 2012

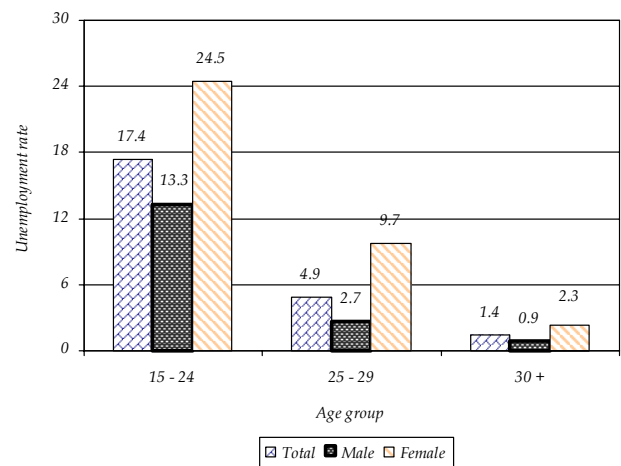
Level of Education	Unemployment rate		
	Total	Male	Female
Total	3.9	2.7	6.3
Below G.C.E.(O/L)	2.6	2.4	3.2
G.C.E.(O/L)	5.3	3.4	9.1
Below G.C.E.(A/L) & above	7.1	3.5	11.4



Table 9: Unemployment rate by age group and sex – Fourth Quarter 2012

Age group	Total	Sex	
		Male	Female
Total	3.9	2.7	6.3
15 - 24	17.4	13.3	24.5
25 - 29	4.9	2.7	9.7
30 +	1.4	0.9	2.3

Figure 3 : Unemployment rate by age group and sex – Fourth Quarter 2012



As can be seen from table 9, overall unemployment rate reported for female was 6.3 percent and it was 2.7 percent for male. Youth unemployment rate 15 – 24 yrs reported for Fourth quarter 2012 was 17.4 percent and that age group reported the highest unemployment rate. For both males (13.3) and females (24.5). Further the survey results revealed that the unemployment was severe among females than that of males, in all age groups.

The highest unemployment rate was reported from the G.C.E(A/L) and above group which was about 7.1 percent. There were 3.5 percent and 11.4 percent for males and females respectively. This shows the problem of unemployment is more acute in the case of educated females than educated males (Table 8).

⁽¹⁾ Sampling error :

When a sample, rather than the entire population, is surveyed, estimates differ from the true population values they represent. This difference, or sampling error, occurs by chance, and its variability is measured by the standard error of the estimate. **For more details, please refer the explanatory note on the labour force link in the DCS website.**

TABLE 1 - HISTORICAL TABLE OF LABOUR FORCE STATUS (CURRENT) OF THE HOUSEHOLD POPULATION, 10 YEARS OF AGE AND OVER - BOTH SEXES

YEAR	HOUSEHOLD POPULATION (10 YEARS & OVER)	LABOUR FORCE						NOT IN LABOUR FORCE NUMBER
		TOTAL LABOUR FORCE	LABOUR FORCE PARTICI: RATE(%)	EMPLOYED		UNEMPLOYED		
				NUMBER	RATE (% TO TOTAL LABOUR FORCE)	NUMBER	RATE (% TO TOTAL LABOUR FORCE)	
1990 ¹	11,573,941	6,001,148	51.9	5,047,354	84.1	953,794	15.9	5,572,793
1991 ¹	11,795,793	5,877,198	49.8	5,015,517	85.3	861,680	14.7	5,918,596
1992 ¹	12,058,463	5,808,062	48.2	4,962,105	85.4	845,957	14.6	6,250,400
1993 ¹	12,278,055	6,032,383	49.1	5,201,474	86.2	830,910	13.8	6,245,675
1994 ¹	12,492,850	6,078,863	48.7	5,281,272	86.9	797,591	13.1	6,413,985
1995 ¹	12,736,185	6,106,138	47.9	5,357,117	87.7	749,021	12.3	6,630,048
1996 ¹	12,831,240	6,241,889	48.6	5,537,285	88.7	704,604	11.3	6,589,365
1997 ¹	12,870,791	6,266,160	48.7	5,607,881	89.5	658,279	10.5	6,604,630
1998 ¹	12,881,790	6,660,520	51.7	6,049,238	90.8	611,285	9.2	6,221,274
1999 ¹	13,169,250	6,673,487	50.7	6,082,641	91.2	590,846	8.9	6,495,782
2000 ¹	13,564,660	6,827,312	50.3	6,310,145	92.4	517,168	7.6	6,737,345
2001 ¹	13,870,479	6,772,834	48.8	6,235,588	92.1	537,246	7.9	7,097,644
2002 ¹	14,201,396	7,145,382	50.3	6,519,415	91.2	625,967	8.8	7,056,014
2003 ²	15,651,479	7,653,716	48.9	7,012,755	91.6	640,961	8.4	7,997,763
2004 ⁴	16,593,431	8,061,354	48.6	7,394,029	91.7	667,324	8.3	8,532,077
2005 ³	16,870,976	8,141,347	48.3	7,518,007	92.3	623,341	7.7	8,729,628
2006 ¹	14,833,801	7,598,762	51.2	7,105,322	93.5	493,440	6.5	7,235,040
2007 ¹	15,047,882	7,488,896	49.8	7,041,874	94.0	447,021	6.0	7,558,986
2008 ¹	15,078,016	7,568,715	50.2	7,174,706	94.8	394,009	5.2	7,509,301
2008 ²	16,319,065	8,081,702	49.5	7,648,305	94.6	433,397	5.4	8,237,363
2009 ¹	15,397,595	7,572,388	49.2	7,139,537	94.3	432,852	5.7	7,825,206
2009 ²	16,578,628	8,073,668	48.7	7,602,414	94.2	471,254	5.8	8,504,961
2010 ¹	15,650,155	7,610,389	48.6	7,235,641	95.1	374,748	4.9	8,039,766
2010 ²	16,861,526	8,107,739	48.1	7,706,593	95.1	401,146	4.9	8,753,787
2011 ¹	15,842,333	7,737,745	48.8	7,429,794	96.0	307,951	4.0	8,104,588
2011 ²	17,087,643	8,236,243	48.2	7,894,439	95.8	341,804	4.2	8,851,399
2011 ³	17,909,743	8,554,730	47.8	8,196,927	95.8	357,803	4.2	9,355,013
2012 Q2 ¹	15,677,279	7,403,166	47.2	7,120,518	96.2	282,648	3.8	8,274,113
2012 Q2 ²	16,904,777	7,916,625	46.8	7,609,654	96.1	306,971	3.9	8,988,153
2012 Q2 ³	17,784,605	8,260,028	46.4	7,936,294	96.1	323,735	3.9	9,524,576
2012 Q3 ¹	15,790,959	7,601,830	48.1	7,304,238	96.1	297,591	3.9	8,189,129
2012 Q3 ²	16,982,411	8,071,455	47.5	7,746,663	96.0	324,792	4.0	8,910,956
2012 Q3 ³	17,838,178	8,418,106	47.2	8,074,808	95.9	343,298	4.1	9,420,072
2012 Q4 ¹	15,999,423	7,880,055	49.3	7,579,136	96.2	300,919	3.8	8,119,368
2012 Q4 ²	17,242,320	8,371,583	48.6	8,049,420	96.2	322,162	3.8	8,870,737
2012 Q4 ³	18,123,364	8,715,983	48.1	8,375,009	96.1	340,974	3.9	9,407,381

Note: The normal Labour Force Survey programme was not implemented in 2005 due to the Tsunami - 2004. However a special labour force survey was conducted in August 2005 and the estimates based on this special survey are given under year 2005.

¹ - Excluding Northern & Eastern provinces

² - Including Eastern province but Excluding Northern province

³ - All the districts are included

⁴ - Excluding Mulathivu, Kilinochchi districts.

**TABLE 1A - HISTORICAL TABLE OF LABOUR FORCE STATUS (CURRENT) OF THE HOUSEHOLD POPULATION,
10 YEARS OF AGE AND OVER - MALE**

YEAR	HOUSEHOLD		LABOUR FORCE					NOT IN
	POPULATION (10 YEARS & OVER)	TOTAL LABOUR FORCE	LABOUR FORCE PARTICI: RATE(%)	EMPLOYED		UNEMPLOYED		LABOUR FORCE NUMBER
				NUMBER	RATE (% TO TOTAL LABOUR FORCE)	NUMBER	RATE (% TO TOTAL LABOUR FORCE)	
1995 ¹	6,318,003	4,068,608	64.4	3,700,951	91.0	367,656	9.0	2,249,395
1996 ¹	6,373,670	4,200,886	65.9	3,857,147	91.8	343,741	8.2	2,172,784
1997 ¹	6,372,365	4,184,248	65.6	3,862,087	92.3	322,168	7.7	2,188,110
1998 ¹	6,344,453	4,281,996	67.5	4,004,504	93.5	277,491	6.5	2,062,456
1999 ¹	6,506,662	4,402,713	67.7	4,107,497	93.3	295,217	6.7	2,103,953
2000 ¹	6,702,871	4,501,597	67.2	4,241,477	94.2	260,120	5.8	2,201,274
2001 ¹	6,837,264	4,529,016	66.2	4,248,877	93.8	280,139	6.2	2,308,248
2002 ¹	6,935,012	4,705,586	67.9	4,395,164	93.4	310,421	6.6	2,229,427
2003 ²	7,657,368	5,144,206	67.2	4,833,483	94.0	310,723	6.0	2,513,162
2004 ⁴	8,049,643	5,372,897	66.7	5,049,426	94.0	323,471	6.0	2,676,746
2005 ³	8,103,016	5,436,362	67.1	5,134,765	94.5	301,597	5.5	2,666,654
2006 ¹	7,098,813	4,837,308	68.1	4,610,643	95.3	226,664	4.7	2,261,505
2007 ¹	7,174,676	4,862,788	67.8	4,653,067	95.7	209,721	4.3	2,311,888
2008 ¹	7,122,164	4,838,462	67.9	4,663,277	96.4	175,184	3.6	2,283,702
2008 ²	7,713,680	5,227,427	67.8	5,033,449	96.3	193,978	3.7	2,486,253
2009 ¹	7,221,475	4,815,541	66.7	4,609,198	95.7	206,343	4.3	2,405,934
2009 ²	7,783,492	5,186,457	66.6	4,963,176	95.7	223,281	4.3	2,597,035
2010 ¹	7,345,889	4,944,338	67.3	4,770,376	96.5	173,962	3.5	2,401,551
2010 ²	7,919,105	5,317,553	67.1	5,131,986	96.5	185,568	3.5	2,601,551
2011 ¹	7,479,409	4,990,650	66.7	4,855,242	97.3	135,408	2.7	2,488,758
2011 ²	8,078,463	5,374,187	66.5	5,227,317	97.3	146,870	2.7	2,704,277
2011 ³	8,473,177	5,613,383	66.2	5,460,328	97.3	153,055	2.7	2,859,794
2012 Q2 ¹	7,386,340	4,928,464	66.7	4,780,209	97.0	148,255	3.0	2,457,876
2012 Q2 ²	7,974,938	5,323,115	66.7	5,164,035	97.0	159,081	3.0	2,651,822
2012 Q2 ³	8,382,075	5,575,406	66.5	5,410,758	97.0	164,648	3.0	2,806,669
2012 Q3 ¹	7,426,566	4,956,418	66.7	4,815,934	97.2	140,484	2.8	2,470,148
2012 Q3 ²	7,991,871	5,312,304	66.5	5,159,137	97.1	153,167	2.9	2,679,567
2012 Q3 ³	8,393,810	5,554,158	66.2	5,396,138	97.2	158,020	2.8	2,839,652
2012 Q4 ¹	7,538,736	5,146,344	68.3	5,007,780	97.3	138,564	2.7	2,392,392
2012 Q4 ²	8,133,225	5,522,898	67.9	5,372,897	97.3	150,001	2.7	2,610,327
2012 Q4 ³	8,554,616	5,781,277	67.6	5,624,370	97.3	156,907	2.7	2,773,339

¹ - Excluding Northern & Eastern provinces

² - Including Eastern province but Excluding Northern province

³ - All the districts are included

⁴ - Excluding Mulathivu, Kilinochchi districts.

**TABLE 1B - HISTORICAL TABLE OF LABOUR FORCE STATUS (CURRENT) OF THE HOUSEHOLD POPULATION,
10 YEARS OF AGE AND OVER - FEMALE**

YEAR	HOUSEHOLD	LABOUR FORCE						NOT IN
	POPULATION	TOTAL	LABOUR	EMPLOYED		UNEMPLOYED		LABOUR
	(10 YEARS	LABOUR	FORCE	NUMBER	RATE	NUMBER	RATE	FORCE
	& OVER)	FORCE	PARTICI:	(% TO TOTAL		(% TO TOTAL		NUMBER
		RATE(%)	LABOUR FORCE)		LABOUR FORCE)			
1995 ¹	6,418,183	2,037,530	31.7	1,656,166	81.3	381,364	18.7	4,380,652
1996 ¹	6,457,583	2,041,002	31.6	1,680,138	82.3	360,864	17.7	4,416,583
1997 ¹	6,498,427	2,081,906	32.0	1,745,794	83.9	336,112	16.1	4,416,521
1998 ¹	6,537,344	2,378,526	36.4	2,044,732	86.0	333,795	14.0	4,158,818
1999 ¹	6,662,613	2,270,782	34.1	1,975,153	87.0	295,629	13.0	4,392,047
2000 ¹	6,861,794	2,325,716	33.9	2,068,667	89.0	257,048	11.0	4,536,078
2001 ¹	7,033,214	2,243,818	31.9	1,986,711	88.5	257,107	11.5	4,789,396
2002 ¹	7,266,384	2,439,796	33.6	2,124,250	87.1	315,546	12.9	4,826,588
2003 ²	7,994,111	2,509,510	31.4	2,179,272	86.8	330,238	13.2	5,484,600
2004 ⁴	8,543,788	2,688,457	31.5	2,344,604	87.2	343,853	12.8	5,855,331
2005 ³	8,767,960	2,704,985	30.9	2,383,241	88.1	321,744	11.9	6,062,975
2006 ¹	7,734,989	2,761,454	35.7	2,494,679	90.3	266,775	9.7	4,973,535
2007 ¹	7,873,206	2,626,108	33.4	2,388,807	91.0	237,300	9.0	5,247,098
2008 ¹	7,955,852	2,730,253	34.3	2,511,429	92.0	218,825	8.0	5,225,599
2008 ²	8,605,385	2,854,275	33.2	2,614,856	91.6	239,419	8.4	5,751,110
2009 ¹	8,176,119	2,756,847	33.7	2,530,339	91.8	226,508	8.2	5,419,272
2009 ²	8,795,136	2,887,211	32.8	2,639,238	91.4	247,973	8.6	5,907,926
2010 ¹	8,304,266	2,666,051	32.1	2,465,265	92.5	200,786	7.5	5,638,215
2010 ²	8,942,422	2,790,186	31.2	2,574,608	92.3	215,578	7.7	6,152,236
2011 ¹	8,362,924	2,747,095	32.8	2,574,552	93.7	172,543	6.3	5,615,830
2011 ²	9,009,179	2,862,057	31.8	2,667,123	93.2	194,934	6.8	6,147,123
2011 ³	9,436,566	2,941,347	31.2	2,736,599	93.0	204,748	7.0	6,495,220
2012 Q2 ¹	8,290,939	2,474,702	29.8	2,340,309	94.6	134,393	5.4	5,816,237
2012 Q2 ²	8,929,840	2,593,509	29.0	2,445,619	94.3	147,890	5.7	6,336,331
2012 Q2 ³	9,402,530	2,684,622	28.6	2,525,535	94.1	159,087	5.9	6,717,908
2012 Q3 ¹	8,364,393	2,645,412	31.6	2,488,304	94.1	157,108	5.9	5,718,982
2012 Q3 ²	8,990,540	2,759,151	30.7	2,587,527	93.8	171,625	6.2	6,231,389
2012 Q3 ³	9,444,369	2,863,948	30.3	2,678,670	93.5	185,278	6.5	6,580,420
2012 Q4 ¹	8,460,687	2,733,711	32.3	2,571,356	94.1	162,355	5.9	5,726,976
2012 Q4 ²	9,109,094	2,848,685	31.3	2,676,523	94.0	172,161	6.0	6,260,410
2012 Q4 ³	9,568,748	2,934,706	30.7	2,750,639	93.7	184,068	6.3	6,634,042

¹ - Excluding Northern & Eastern provinces

² - Including Eastern province but Excluding Northern province

³ - All the districts are included

⁴ - Excluding Mulathivu, Kilinochchi districts.

TABLE 2 - LABOUR FORCE STATUS (CURRENT) OF THE HOUSEHOLD POPULATION 10 YEARS OF AGE AND OVER ,BY AGE - BOTH SEXES

(2012 4 th Quarter)								
AGE	HOUSEHOLD POP: (10 YEARS & OVER)	LABOUR FORCE						NOT IN LABOUR FORCE NUMBER
		TOTAL LABOUR FORCE	LABOUR FORCE PARTICI: RATE(%)	EMPLOYED		UNEMPLOYED		
				NUMBER	RATE (% TO TOTAL LABOUR FORCE)	NUMBER	RATE (% TO TOTAL LABOUR FORCE)	
ALL AGES	18,123,364	8,715,983	48.1	8,375,009	96.1	340,974	3.9	9,407,381
10 - 14 YRS	*	*	*	*	*	*	*	*
15 - 19 YRS	1,722,848	260,733	15.1	210,609	80.8	50,124	19.2	1,462,115
20 - 24 YRS	1,556,171	890,084	57.2	740,314	83.2	149,769	16.8	666,088
25 - 29 YRS	1,510,885	1,012,678	67.0	963,084	95.1	49,594	4.9	498,207
30 - 39 YRS	3,185,874	2,095,116	65.8	2,044,859	97.6	50,258	2.4	1,090,757
40 + YRS	8,283,846	4,447,439	53.7	4,406,210	99.1	41,229	0.9	3,836,407

* Reliable estimates cannot be provided.

TABLE 2A - LABOUR FORCE STATUS (CURRENT) OF THE HOUSEHOLD POPULATION 10 YEARS OF AGE AND OVER ,BY AGE - MALE
(2012 4th Quarter)

AGE	HOUSEHOLD POP: (10 YEARS & OVER)	LABOUR FORCE						NOT IN LABOUR FORCE NUMBER
		TOTAL LABOUR FORCE	LABOUR FORCE PARTICI: RATE(%)	EMPLOYED		UNEMPLOYED		
				NUMBER	RATE (% TO TOTAL LABOUR FORCE)	NUMBER	RATE (% TO TOTAL LABOUR FORCE)	
ALL AGES	8,554,616	5,781,277	67.6	5,624,370	97.3	156,907	2.7	2,773,339
10 - 14 YRS	*	*	*	*	*	*	*	*
15 - 19 YRS	848,027	184,409	21.7	149,931	81.3	34,478	18.7	663,618
20 - 24 YRS	723,550	550,600	76.1	487,252	88.5	63,348	11.5	172,949
25 - 29 YRS	739,479	698,437	94.4	679,374	97.3	19,063	2.7	41,041
30 - 39 YRS	1,450,274	1,383,795	95.4	1,361,183	98.4	22,611	1.6	66,479
40 + YRS	3,852,247	2,955,117	76.7	2,937,711	99.4	17,406	0.6	897,130

TABLE 2B - LABOUR FORCE STATUS (CURRENT) OF THE HOUSEHOLD POPULATION 10 YEARS OF AGE AND OVER ,BY AGE - FEMALE
(2012 4th Quarter)


AGE	HOUSEHOLD POP: (10 YEARS & OVER)	LABOUR FORCE						NOT IN LABOUR FORCE NUMBER
		TOTAL LABOUR FORCE	LABOUR FORCE PARTICI: RATE(%)	EMPLOYED		UNEMPLOYED		
				NUMBER	RATE (% TO TOTAL LABOUR FORCE)	NUMBER	RATE (% TO TOTAL LABOUR FORCE)	
ALL AGES	9,568,748	2,934,706	30.7	2,750,639	93.7	184,068	6.3	6,634,042
10 - 14 YRS	*	*	*	*	*	*	*	*
15 - 19 YRS	874,821	76,324	8.7	60,677	79.5	15,646	20.5	798,497
20 - 24 YRS	832,622	339,483	40.8	253,063	74.5	86,421	25.5	493,138
25 - 29 YRS	771,406	314,240	40.7	283,710	90.3	30,531	9.7	457,166
30 - 39 YRS	1,735,600	711,322	41.0	683,675	96.1	27,647	3.9	1,024,278
40 + YRS	4,431,599	1,492,322	33.7	1,468,499	98.4	23,823	1.6	2,939,277

* Reliable estimates cannot be provided due to small cell sizes.

▨ These figures are to be treated with caution as the corresponding CV (Coefficient of variation) values are high.

**TABLE 3 - HISTORICAL TABLE OF CURRENTLY EMPLOYED PERSONS BY AGE GROUPS
(PERCENTAGE) - BOTH SEXES**

Year	All Ages	Age Groups					
		10 - 14 YRS	15 - 19 YRS	20 - 24 YRS	25 - 29 YRS	30 - 39 YRS	40+ YRS
1990 ¹	100.0	1.1	5.7	11.9	13.7	27.0	40.7
1991 ¹	100.0	0.7	5.4	12.7	13.7	26.8	40.7
1992 ¹	100.0	0.5	5.1	13.4	14.1	27.0	39.9
1993 ¹	100.0	0.4	5.2	12.7	14.2	26.7	40.7
1994 ¹	100.0	0.4	4.9	12.3	13.9	28.2	40.3
1995 ¹	100.0	0.3	4.9	11.6	14.1	26.5	42.7
1996 ¹	100.0	0.4	5.3	12.1	13.7	28.1	40.4
1997 ¹	100.0	0.3	5.1	11.9	13.3	27.2	42.1
1998 ¹	100.0	0.8	5.9	12.1	12.5	26.7	42.1
1999 ¹	100.0	0.9	5.8	11.8	12.2	26.1	43.3
2000 ¹	100.0	0.5	5.2	12.2	12.3	26.0	43.8
2001 ¹	100.0	0.4	4.3	12.1	12.0	25.4	45.8
2002 ¹	100.0	0.3	4.4	12.2	12.1	26.2	44.8
2003 ²	100.0	0.3	4.2	11.6	12.2	26.3	45.4
2004 ⁴	100.0	0.4	4.1	11.8	12.2	25.5	46.0
2005 ³	100.0	0.1	3.6	11.3	12.9	25.6	46.5
2006 ¹	100.0	0.3	4.0	10.2	12.0	24.2	49.2
2007 ¹	100.0	0.2	3.6	9.8	12.0	23.9	50.5
2008 ¹	100.0	0.2	3.4	9.8	11.6	23.8	51.2
2008 ²	100.0	0.3	3.5	9.8	11.6	23.8	50.9
2009 ¹	100.0	0.3	3.3	8.5	11.4	24.3	52.2
2009 ²	100.0	0.3	3.4	8.5	11.5	24.3	51.9
2010 ¹	100.0	0.1	2.9	8.4	10.8	24.0	53.8
2010 ²	100.0	0.1	3.0	8.5	10.9	24.0	53.5
2011 ¹	100.0	0.1	2.9	8.4	10.9	24.2	53.4
2011 ²	100.0	0.1	3.0	8.4	10.9	24.3	53.2
2011 ³	100.0	0.1	3.1	8.6	11.0	24.3	52.9
2012 Q2 ¹	100.0	0.1	2.3	8.2	10.4	26.0	53.0
2012 Q2 ²	100.0	0.1	2.4	8.2	10.5	26.0	52.9
2012 Q2 ³	100.0	0.1	2.4	8.3	10.7	26.1	52.5
2012 Q3 ¹	100.0	0.2	2.5	7.6	10.4	25.0	54.4
2012 Q3 ²	100.0	0.2	2.6	7.7	10.5	24.9	54.0
2012 Q3 ³	100.0	0.2	2.6	7.8	10.7	25.0	53.7
2012 Q4 ¹	100.0	0.1	2.5	8.9	11.3	24.2	53.0
2012 Q4 ²	100.0	0.1	2.5	8.8	11.3	24.4	52.8
2012 Q4 ³	100.0	0.1	2.5	8.8	11.5	24.4	52.6

 These figures are to be treated with caution as the corresponding CV (Coefficient of variation) values are high.

¹ - Excluding Northern & Eastern provinces

³ - All the districts are included

² - Including Eastern province but Excluding Northern province

⁴ - Excluding Mulathivu, Kilinochchi districts.

**TABLE 3A - HISTORICAL TABLE OF CURRENTLY EMPLOYED PERSONS BY AGE GROUPS
(PERCENTAGE) - MALE**

Year	All Ages	Age Groups					
		10 - 14 YRS	15 - 19 YRS	20 - 24 YRS	25 - 29 YRS	30 - 39 YRS	40+ YRS
1999 ¹	100.0	0.7	5.8	11.8	11.8	25.7	44.1
2000 ¹	100.0	0.4	5.2	12.0	12.3	25.4	44.7
2001 ¹	100.0	0.3	4.1	12.0	12.1	25.0	46.4
2002 ¹	100.0	0.3	4.2	11.8	11.8	26.2	45.8
2003 ²	100.0	0.3	3.9	11.4	12.7	25.7	46.1
2004 ⁴	100.0	0.3	3.9	11.5	12.6	25.0	46.6
2005 ³	100.0	0.2	4.1	11.1	13.3	25.2	46.1
2006 ¹	100.0	0.3	4.0	10.2	12.2	23.9	49.4
2007 ¹	100.0	0.2	3.7	9.6	12.7	23.7	50.1
2008 ¹	100.0	0.3	3.4	9.6	11.9	23.9	51.0
2008 ²	100.0	0.3	3.7	9.7	11.9	23.9	50.5
2009 ¹	100.0	0.3	3.3	8.3	11.7	24.2	52.3
2009 ²	100.0	0.3	3.5	8.4	11.8	24.2	51.9
2010 ¹	100.0	0.1	2.9	8.1	11.2	24.0	53.6
2010 ²	100.0	0.1	3.1	8.2	11.3	24.1	53.2
2011 ¹	100.0	0.2	3.0	8.2	11.3	24.2	53.1
2011 ²	100.0	0.1	3.1	8.4	11.2	24.3	52.8
2011 ³	100.0	0.1	3.2	8.6	11.3	24.3	52.5
2012 Q2 ¹	100.0	0.1	2.4	7.9	10.6	26.6	52.4
2012 Q2 ²	100.0	0.1	2.4	7.9	10.7	26.5	52.3
2012 Q2 ³	100.0	0.1	2.5	8.1	10.9	26.5	52.0
2012 Q3 ¹	100.0	0.2	2.8	7.8	10.1	24.8	54.4
2012 Q3 ²	100.0	0.2	2.9	7.9	10.4	24.8	53.8
2012 Q3 ³	100.0	0.2	2.9	8.1	10.6	24.8	53.5
2012 Q4 ¹	100.0	0.2	2.6	8.6	11.8	24.0	52.9
2012 Q4 ²	100.0	0.2	2.7	8.5	11.9	24.2	52.6
2012 Q4 ³	100.0	0.2	2.7	8.7	12.1	24.2	52.2

**TABLE 3B - HISTORICAL TABLE OF CURRENTLY EMPLOYED PERSONS BY AGE GROUPS
(PERCENTAGE) - FEMALE**

Year	All Ages	Age Groups					
		10 - 14 YRS	15 - 19 YRS	20 - 24 YRS	25 - 29 YRS	30 - 39 YRS	40+ YRS
1999 ¹	100.0	1.1	5.9	11.7	12.9	27.1	41.4
2000 ¹	100.0	0.7	5.3	12.6	12.1	27.4	41.9
2001 ¹	100.0	0.5	4.7	12.4	11.8	26.2	44.5
2002 ¹	100.0	0.5	4.7	13.1	12.6	26.2	42.9
2003 ²	100.0	0.4	4.7	12.2	11.2	27.6	43.9
2004 ⁴	100.0	0.5	4.6	12.3	11.3	26.6	44.7
2005 ³	100.0	0.1	2.5	11.9	12.0	26.4	47.2
2006 ¹	100.0	0.3	4.1	10.3	11.7	24.8	48.8
2007 ¹	100.0	0.3	3.4	10.1	10.7	24.2	51.3
2008 ¹	100.0	0.2	3.2	10.1	11.0	23.8	51.7
2008 ²	100.0	0.2	3.2	10.1	11.0	23.8	51.7
2009 ¹	100.0	0.4	3.2	8.9	10.9	24.5	52.2
2009 ²	100.0	0.3	3.3	8.9	11.0	24.5	52.0
2010 ¹	100.0	0.2	2.9	9.1	10.0	23.9	54.0
2010 ²	100.0	0.2	2.9	9.2	10.0	23.8	53.9
2011 ¹	100.0	0.1	2.8	8.6	10.2	24.2	54.1
2011 ²	100.0	0.1	2.8	8.5	10.2	24.3	54.0
2011 ³	100.0	0.1	2.8	8.5	10.3	24.4	53.9
2012 Q2 ¹	100.0	0.1	2.2	8.8	10.0	24.7	54.2
2012 Q2 ²	100.0	0.1	2.2	8.7	10.1	25.0	54.0
2012 Q2 ³	100.0	0.1	2.2	8.9	10.2	25.1	53.4
2012 Q3 ¹	100.0	0.2	1.9	7.2	10.9	25.3	54.4
2012 Q3 ²	100.0	0.2	2.0	7.2	10.8	25.3	54.5
2012 Q3 ³	100.0	0.2	2.0	7.2	11.0	25.4	54.2
2012 Q4 ¹	100.0	0.0	2.3	9.5	10.2	24.7	53.2
2012 Q4 ²	100.0	0.0	2.2	9.3	10.2	24.9	53.4
2012 Q4 ³	100.0	0.0	2.2	9.2	10.3	24.9	53.4

These figures are to be treated with caution as the corresponding CV (Coefficient of variation) values are high.

¹ - Excluding Northern & Eastern provinces

³ - All the districts are included

² - Including Eastern province but Excluding Northern province

⁴ - Excluding Mulathivu, Kilinochchi districts.

**TABLE 4 - HISTORICAL TABLE OF CURRENTLY EMPLOYED PERSONS BY LEVEL OF EDUCATION
(PERCENTAGE) - BOTH SEXES**

Year	Total	Level of education			
		Grade 5 & Below	Grades 6 - 10	GCE (O.L)/ NCGE	GCE (A.L)/ HNCE & above
1990 ¹	100.0	31.9	45.1	16.0	7.0
1991 ¹	100.0	31.6	44.8	15.6	7.9
1992 ¹	100.0	29.9	44.9	16.5	8.7
1993 ¹	100.0	28.5	45.1	16.9	9.5
1994 ¹	100.0	28.2	45.4	17.5	8.8
1995 ¹	100.0	26.8	44.9	18.0	10.3
1996 ¹	100.0	29.5	43.3	16.9	10.3
1997 ¹	100.0	27.9	44.0	17.6	10.5
1998 ¹	100.0	26.8	45.0	17.2	11.0
1999 ¹	100.0	25.4	45.7	18.0	10.9
2000 ¹	100.0	25.1	46.3	16.7	11.9
2001 ¹	100.0	22.7	46.1	17.7	13.5
2002 ¹	100.0	24.6	45.6	15.8	14.0
2003 ²	100.0	24.5	46.2	15.9	13.3
2004 ⁴	100.0	24.3	44.7	16.8	14.2
2005 ³	100.0	20.6	45.8	18.2	15.4
2006 ¹	100.0	22.2	46.9	16.7	14.2
2007 ¹	100.0	21.1	47.8	15.6	15.5
2008 ¹	100.0	20.3	48.0	15.8	16.0
2008 ²	100.0	21.9	47.4	15.4	15.3
2009 ¹	100.0	20.4	47.7	15.6	16.3
2009 ²	100.0	21.1	47.3	15.5	16.1
2010 ¹	100.0	19.5	48.7	15.9	16.0
2010 ²	100.0	20.2	48.2	15.8	15.7
2011 ¹	100.0	18.2	48.5	15.7	17.6
2011 ²	100.0	18.8	47.8	15.8	17.6
2011 ³	100.0	18.8	48.1	15.7	17.4
2012 Q2 ¹	100.0	18.6	47.4	19.2	14.8
2012 Q2 ²	100.0	19.3	46.8	19.1	14.8
2012 Q2 ³	100.0	19.1	47.1	18.9	14.9
2012 Q3 ¹	100.0	17.5	47.4	17.5	17.6
2012 Q3 ²	100.0	18.4	46.7	17.5	17.3
2012 Q3 ³	100.0	18.4	47.0	17.3	17.3
2012 Q4 ¹	100.0	17.4	47.8	16.6	18.2
2012 Q4 ²	100.0	18.1	47.4	16.6	17.9
2012 Q4 ³	100.0	18.1	47.7	16.6	17.7

¹ - Excluding Northern & Eastern provinces

³ - All the districts are included

² - Including Eastern province but Excluding Northern province

⁴ - Excluding Mulathivu, Kilinochchi districts.

TABLE 4A - HISTORICAL TABLE OF CURRENTLY EMPLOYED PERSONS BY LEVEL OF EDUCATION (PERCENTAGE) - MALE

Year	Total	Level of education			
		Grade 5 & Below	Grades 6 - 10	GCE (O.L)/ NCGE	GCE (A.L)/ HNCE & above
1999 ¹	100.0	24.0	49.4	17.7	9.0
2000 ¹	100.0	24.1	49.6	16.6	9.8
2001 ¹	100.0	21.5	49.3	17.8	11.4
2002 ¹	100.0	23.5	49.1	16.0	11.4
2003 ²	100.0	23.8	49.2	16.2	10.8
2004 ⁴	100.0	22.6	48.3	17.3	11.8
2005 ³	100.0	19.9	49.6	18.0	12.5
2006 ¹	100.0	21.0	50.4	16.6	12.1
2007 ¹	100.0	20.1	51.3	15.6	13.0
2008 ¹	100.0	19.4	51.3	16.1	13.2
2008 ²	100.0	21.1	50.7	15.6	12.6
2009 ¹	100.0	19.5	51.3	15.7	13.4
2009 ²	100.0	20.3	50.8	15.6	13.2
2010 ¹	100.0	18.3	52.2	16.2	13.3
2010 ²	100.0	19.1	51.7	16.1	13.1
2011 ¹	100.0	17.5	51.4	16.1	14.9
2011 ²	100.0	18.3	50.6	16.3	14.8
2011 ³	100.0	18.2	51.1	16.1	14.6
2012 Q2 ¹	100.0	18.1	51.2	19.6	11.1
2012 Q2 ²	100.0	19.1	50.3	19.4	11.2
2012 Q2 ³	100.0	18.9	50.8	19.1	11.2
2012 Q3 ¹	100.0	16.7	51.7	17.9	13.8
2012 Q3 ²	100.0	17.6	50.9	18.0	13.5
2012 Q3 ³	100.0	17.6	51.2	17.7	13.5
2012 Q4 ¹	100.0	16.4	51.7	16.5	15.4
2012 Q4 ²	100.0	17.2	51.2	16.5	15.0
2012 Q4 ³	100.0	17.3	51.5	16.5	14.8

TABLE 4B - HISTORICAL TABLE OF CURRENTLY EMPLOYED PERSONS BY LEVEL OF EDUCATION (PERCENTAGE) - FEMALE

Year	Total	Level of education			
		Grade 5 & Below	Grades 6 - 10	GCE (O.L)/ NCGE	GCE (A.L)/ HNCE & above
1999 ¹	100.0	28.3	38.0	18.7	15.0
2000 ¹	100.0	27.3	39.6	17.1	16.1
2001 ¹	100.0	25.5	39.2	17.3	18.0
2002 ¹	100.0	27.0	38.3	15.3	19.4
2003 ²	100.0	26.1	39.6	15.5	18.9
2004 ⁴	100.0	27.9	36.9	15.8	19.4
2005 ³	100.0	22.1	37.6	18.6	21.7
2006 ¹	100.0	24.3	40.4	17.0	18.2
2007 ¹	100.0	23.0	41.1	15.5	20.4
2008 ¹	100.0	21.9	41.8	15.3	21.0
2008 ²	100.0	23.6	40.9	14.9	20.6
2009 ¹	100.0	22.0	41.2	15.3	21.6
2009 ²	100.0	22.4	40.8	15.2	21.6
2010 ¹	100.0	21.9	41.9	15.2	21.0
2010 ²	100.0	22.3	41.4	15.3	21.0
2011 ¹	100.0	19.5	42.8	14.9	22.7
2011 ²	100.0	19.9	42.3	14.9	22.9
2011 ³	100.0	19.8	42.2	14.9	23.1
2012 Q2 ¹	100.0	19.8	39.6	18.2	22.5
2012 Q2 ²	100.0	19.8	39.4	18.3	22.5
2012 Q2 ³	100.0	19.6	39.3	18.4	22.7
2012 Q3 ¹	100.0	19.2	39.1	16.7	24.9
2012 Q3 ²	100.0	20.1	38.5	16.6	24.9
2012 Q3 ³	100.0	20.0	38.5	16.6	24.9
2012 Q4 ¹	100.0	19.3	40.2	16.8	23.7
2012 Q4 ²	100.0	19.9	39.7	16.7	23.7
2012 Q4 ³	100.0	19.8	39.9	16.7	23.7

¹ - Excluding Northern & Eastern provinces

³ - All the districts are included

² - Including Eastern province but Excluding Northern province

⁴ - Excluding Mulathivu, Kilinochchi districts.

**TABLE 5 - HISTORICAL TABLE OF CURRENTLY EMPLOYED PERSONS BY EMPLOYMENT STATUS
(PERCENTAGE) - BOTH SEXES**

YEAR	TOTAL EMPLOYED	EMPLOYEE			EMPLOYER	OWN ACCOUNT WORKER	UNPAID FAMILY WORKER
		TOTAL	PUBLIC	PRIVATE			
1990 ¹	100.0	55.2	21.5	33.7	1.8	29.2	13.8
1991 ¹	100.0	62.4	22.9	39.5	2.2	25.4	10.0
1992 ¹	100.0	60.1	20.0	40.0	1.6	27.1	11.2
1993 ¹	100.0	60.0	17.4	42.8	2.0	27.4	10.4
1994 ¹	100.0	60.7	16.4	44.3	2.3	27.2	9.8
1995 ¹	100.0	59.8	15.6	44.3	2.5	28.3	9.4
1996 ¹	100.0	60.8	15.0	45.8	2.3	26.8	10.0
1997 ¹	100.0	59.4	15.1	44.3	2.3	28.8	9.4
1998 ¹	100.0	55.6	14.5	41.2	1.9	28.9	13.6
1999 ¹	100.0	57.5	14.4	43.1	2.0	28.3	12.2
2000 ¹	100.0	56.3	13.4	42.9	2.3	28.4	13.0
2001 ¹	100.0	58.6	13.9	44.7	2.3	28.5	10.6
2002 ¹	100.0	57.9	13.4	44.5	2.8	28.6	10.7
2003 ²	100.0	57.9	13.5	44.4	2.6	29.6	9.9
2004 ⁴	100.0	59.4	13.0	46.4	2.9	28.3	9.4
2005 ³	100.0	59.3	13.3	46.1	3.1	29.7	7.9
2006 ¹	100.0	55.6	13.4	42.1	3.1	30.8	10.5
2007 ¹	100.0	56.5	13.8	42.7	2.8	30.4	10.3
2008 ¹	100.0	56.0	14.9	41.1	3.0	30.2	10.8
2008 ²	100.0	56.4	15.2	41.2	2.9	30.2	10.4
2009 ¹	100.0	57.3	15.2	42.1	2.7	29.0	11.0
2009 ²	100.0	57.6	15.5	42.1	2.6	29.2	10.6
2010 ¹	100.0	55.2	13.9	41.3	2.7	31.5	10.7
2010 ²	100.0	55.5	14.3	41.2	2.6	31.5	10.4
2011 ¹	100.0	54.3	13.8	40.4	2.9	31.4	11.4
2011 ²	100.0	54.8	14.3	40.4	2.9	31.4	11.0
2011 ³	100.0	54.9	14.4	40.5	2.9	31.5	10.8
2012 Q2 ¹	100.0	55.7	13.7	42.0	2.6	33.1	8.7
2012 Q2 ²	100.0	56.0	14.0	42.0	2.5	33.1	8.3
2012 Q2 ³	100.0	56.2	14.3	41.9	2.5	33.1	8.1
2012 Q3 ¹	100.0	56.4	14.7	41.7	2.9	31.0	9.7
2012 Q3 ²	100.0	56.5	14.8	41.7	2.9	31.1	9.5
2012 Q3 ³	100.0	56.5	15.0	41.5	3.0	31.2	9.4
2012 Q4 ¹	100.0	56.9	16.1	40.8	3.1	30.4	9.5
2012 Q4 ²	100.0	56.7	16.1	40.6	3.0	31.1	9.2
2012 Q4 ³	100.0	56.5	16.1	40.5	3.0	31.4	9.0

¹ - Excluding Northern & Eastern provinces

³ - All the districts are included

² - Including Eastern province but Excluding Northern province

⁴ - Excluding Mulathivu, Kilinochchi districts.

TABLE 5A - HISTORICAL TABLE OF CURRENTLY EMPLOYED PERSONS BY EMPLOYMENT STATUS (PERCENTAGE) - MALE

YEAR	TOTAL EMPLOYED	EMPLOYEE			EMPLOYER	OWN ACCOUNT WORKER	UNPAID FAMILY WORKER
		TOTAL	PUBLIC	PRIVATE			
1999 ¹	100.0	57.7	13.8	43.9	2.7	33.5	6.2
2000 ¹	100.0	56.6	12.6	44.0	3.1	33.8	6.5
2001 ¹	100.0	57.9	12.9	45.0	3.1	33.4	5.5
2002 ¹	100.0	57.5	12.6	44.8	3.7	34.0	4.8
2003 ²	100.0	57.4	12.6	44.9	3.4	34.5	4.8
2004 ⁴	100.0	58.9	11.9	47.0	3.9	32.7	4.5
2005 ³	100.0	59.9	11.7	48.1	4.1	32.9	3.2
2006 ¹	100.0	56.0	12.3	43.8	4.4	35.2	4.4
2007 ¹	100.0	57.2	12.1	45.1	3.9	34.5	4.4
2008 ¹	100.0	56.7	13.3	43.4	4.2	34.6	4.5
2008 ²	100.0	57.5	13.7	43.8	4.0	34.1	4.3
2009 ¹	100.0	58.5	13.3	45.2	3.7	33.2	4.6
2009 ²	100.0	59.0	13.6	45.4	3.6	33.0	4.5
2010 ¹	100.0	55.4	12.3	43.1	3.6	36.4	4.6
2010 ²	100.0	56.1	12.8	43.3	3.5	35.9	4.4
2011 ¹	100.0	54.9	12.3	42.7	4.0	36.4	4.7
2011 ²	100.0	55.6	12.8	42.9	3.9	36.0	4.5
2011 ³	100.0	55.8	12.7	43.1	3.8	35.9	4.5
2012 Q2 ¹	100.0	54.5	11.2	43.3	3.6	38.3	3.6
2012 Q2 ²	100.0	55.2	11.7	43.5	3.5	37.9	3.4
2012 Q2 ³	100.0	55.3	11.8	43.5	3.4	37.9	3.4
2012 Q3 ¹	100.0	57.3	12.8	44.6	3.8	35.2	3.7
2012 Q3 ²	100.0	57.6	12.9	44.7	3.8	34.9	3.7
2012 Q3 ³	100.0	57.5	13.0	44.5	3.9	34.9	3.7
2012 Q4 ¹	100.0	56.9	13.6	43.3	4.2	34.4	4.4
2012 Q4 ²	100.0	57.0	13.7	43.4	4.1	34.7	4.2
2012 Q4 ³	100.0	56.9	13.6	43.3	4.1	34.9	4.1

TABLE 5B - HISTORICAL TABLE OF CURRENTLY EMPLOYED PERSONS BY EMPLOYMENT STATUS (PERCENTAGE) - FEMALE

YEAR	TOTAL EMPLOYED	EMPLOYEE			EMPLOYER	OWN ACCOUNT WORKER	UNPAID FAMILY WORKER
		TOTAL	PUBLIC	PRIVATE			
1999 ¹	100.0	57.2	15.6	41.5	0.6	17.5	24.8
2000 ¹	100.0	55.5	15.0	40.5	0.8	17.2	26.5
2001 ¹	100.0	60.1	15.9	44.1	0.5	18.1	21.3
2002 ¹	100.0	58.8	15.1	43.7	0.8	17.4	23.0
2003 ²	100.0	59.0	15.7	43.3	0.9	18.8	21.3
2004 ⁴	100.0	60.6	15.5	45.1	0.9	18.7	19.8
2005 ³	100.0	58.3	16.6	41.6	0.9	22.7	18.2
2006 ¹	100.0	54.8	15.6	39.2	0.8	22.7	21.7
2007 ¹	100.0	55.1	17.1	38.0	0.7	22.5	21.7
2008 ¹	100.0	54.7	17.9	36.8	0.7	22.2	22.4
2008 ²	100.0	54.3	18.2	36.2	0.7	22.8	22.2
2009 ¹	100.0	55.2	18.6	36.5	0.9	21.4	22.5
2009 ²	100.0	54.9	19.0	35.9	0.9	22.0	22.3
2010 ¹	100.0	54.7	16.9	37.8	0.8	22.0	22.6
2010 ²	100.0	54.3	17.3	37.0	0.8	22.6	22.4
2011 ¹	100.0	53.0	16.8	36.1	0.9	22.0	24.1
2011 ²	100.0	53.0	17.4	35.7	0.9	22.4	23.6
2011 ³	100.0	53.2	17.8	35.4	0.9	22.6	23.3
2012 Q2 ¹	100.0	58.0	18.7	39.3	0.5	22.5	19.1
2012 Q2 ²	100.0	57.8	19.0	38.7	0.5	23.0	18.7
2012 Q2 ³	100.0	58.2	19.6	38.7	0.5	23.0	18.3
2012 Q3 ¹	100.0	54.7	18.4	36.3	1.2	22.8	21.3
2012 Q3 ²	100.0	54.2	18.5	35.7	1.2	23.5	21.1
2012 Q3 ³	100.0	54.3	18.9	35.4	1.2	23.6	20.9
2012 Q4 ¹	100.0	56.8	20.9	35.9	1.0	22.6	19.5
2012 Q4 ²	100.0	56.0	21.0	35.0	1.0	23.8	19.3
2012 Q4 ³	100.0	55.8	21.2	34.6	1.0	24.2	19.0

These figures are to be treated with caution as the corresponding CV (Coefficient of variation) values are high.

¹ - Excluding Northern & Eastern provinces

⁵ - All the districts are included

² - Including Eastern province but Excluding Northern province

⁴ - Excluding Mulathivu, Kilinochchi districts.

Table 6 - Currently Employed person by Industry group (Based on ISIC Third Revision)

Year	Industry group														
	Total	1	2	3	4	5	6	7	8	9	10	11	12	13	14
2005 ³	7,518,007	2,306,039	1,385,374	542,639	904,008	138,924	484,999	233,736	512,819	297,437	129,237	133,537	53,314	324,440	71,504
2006 ¹	7,105,322	2,287,268	1,363,092	526,861	954,981	129,351	430,331	221,146	400,504	276,783	109,660	123,900	80,247	179,941	21,255
2007 ¹	7,041,874	2,202,098	1,331,368	542,489	932,094	118,516	456,804	215,217	433,013	259,489	115,943	104,601	87,381	219,692	23,168
2008 ¹	7,174,706	2,344,415	1,354,897	533,106	924,468	103,814	425,972	236,024	462,634	298,810	110,933	128,812	84,097	153,297	13,428
2008 ²	7,648,305	2,489,731	1,414,483	590,397	984,326	110,317	447,604	241,474	512,048	325,633	120,987	141,853	84,960	170,572	13,920
2009 ¹	7,139,537	2,318,621	1,301,267	521,417	913,387	133,182	419,627	220,979	487,438	300,143	128,490	104,603	96,132	190,672	3,579
2009 ²	7,602,414	2,475,921	1,348,084	562,234	977,138	141,599	445,111	226,660	524,390	336,012	136,619	123,090	96,367	205,432	3,757
2010 ¹	7,235,641	2,353,599	1,270,292	506,838	985,896	138,983	462,651	255,988	490,720	269,318	104,984	120,841	83,846	190,928	759
2010 ²	7,706,593	2,519,905	1,318,335	548,397	1,050,671	145,795	484,210	264,394	536,759	301,572	115,914	129,688	84,161	205,706	1,087
2011 ¹	7,429,794	2,445,251	1,327,624	513,820	987,833	134,137	461,728	269,112	506,911	281,676	121,986	106,371	76,719	193,071	3,555
2011 ²	7,894,439	2,601,824	1,364,934	550,089	1,048,605	137,952	489,089	280,919	557,821	318,019	129,199	113,068	77,724	220,949	4,250
2011 ³	8,196,927	2,708,020	1,387,432	589,631	1,090,357	141,943	505,396	286,406	575,183	340,460	135,845	123,786	79,107	228,879	4,481
2012 Q2 ¹	7,120,518	2,120,992	1,346,792	616,744	1,007,324	122,218	464,447	229,416	414,394	294,632	137,129	139,064	120,766	106,600	..
2012 Q2 ²	7,609,654	2,288,487	1,390,634	658,636	1,082,428	129,442	498,316	242,426	466,357	319,835	150,659	148,292	123,512	110,632	..
2012 Q2 ³	7,936,294	2,377,937	1,425,788	701,835	1,135,990	130,664	515,395	255,069	485,971	351,620	160,570	154,453	128,468	112,383	152
2012 Q3 ¹	7,304,238	2,246,540	1,308,597	573,288	1,010,091	136,790	496,362	294,499	523,659	272,918	101,557	149,673	82,773	107,494	..
2012 Q3 ²	7,746,665	2,391,021	1,362,684	615,943	1,092,209	138,405	526,083	304,786	562,536	296,189	108,831	152,410	82,773	112,795	..
2012 Q3 ³	8,074,807	2,495,859	1,393,398	661,555	1,135,487	138,946	549,221	316,040	581,433	320,599	117,972	161,080	87,277	115,940	..
2012 Q4 ¹	7,579,136	2,393,634	1,415,385	599,019	1,027,254	114,380	461,276	258,841	584,682	282,114	111,636	151,708	62,652	116,557	..
2012 Q4 ²	8,049,420	2,573,487	1,458,223	645,313	1,103,972	119,163	491,037	263,556	614,868	313,033	121,978	161,442	62,652	120,697	..
2012 Q4 ³	8,375,009	2,684,018	1,493,186	681,371	1,144,602	122,763	513,353	278,140	633,839	333,365	127,623	171,501	66,318	123,565	1,365

.. Negligible

Industry group

- | | |
|--|--|
| 1 Agriculture Forestry and Fishery (A,B) | 8 Public Administration and Defence,Compulsory Social Security (L) |
| 2 Manufacturing (D) | 9 Education (M) |
| 3 Construction, Minning & Quarrying ,
Electricity,Gas and Water supply (C,E,F) | 10 Health and Social work (N) |
| 4 Wholesale and Retail Trade,Repair of Motor Vehicles,
Motorcycles and Personal and Household Goods (G) | 11 Other Community,Social and Personal Service Activities
Extra Teritorial Organizations & bodies (O,Q) |
| 5 Hotels and Restaurants (H) | 12 Private Households with Employed Persons (P) |
| 6 Transport, Storage and Communication (I) | 13 Miscellaneous Labour work |
| 7 Financial Intermediation and Real Estate,
Renting and Business Activities (J,K) | 14 Industries not adequately described |

▨ These figures are to be treated with caution as the corresponding CV (Coefficient of variation) values are high.

Note: The tabulation groups based on ISIC (Rev.3) are indicated as A,B,C.....Q. Due to the limitations on reliability (based on CV),some of these groups have been combined.

¹ - Excluding Northern & Eastern provinces

³ - All the districts are included

² - Including Eastern province but Excluding Northern province

Table 6A - Currently Employed person by Industry group (Based on ISIC Third Revision) - Male

	Total	Industry group							
		1	2	3	4	7	8	9	Other
2005 ³	5,134,765	1,482,610	749,993	519,197	702,048	171,330	376,877	83,551	1,049,159
2006 ¹	4,610,643	1,342,214	683,873	507,192	717,258	156,022	294,597	86,521	822,966
2007 ¹	4,653,067	1,321,995	703,080	523,470	688,653	151,782	308,080	79,092	876,915
2008 ¹	4,663,277	1,388,714	716,259	510,488	680,091	162,634	344,695	87,931	772,466
2008 ²	5,033,449	1,510,401	749,653	565,666	725,049	167,414	385,219	98,596	831,450
2009 ¹	4,609,198	1,382,024	677,262	501,657	669,223	145,341	346,799	90,983	795,909
2009 ²	4,963,176	1,510,834	701,206	541,934	715,499	149,890	377,259	107,615	858,938
2010 ¹	4,770,376	1,411,109	675,462	487,054	729,883	176,715	355,244	83,610	851,301
2010 ²	5,131,986	1,547,382	700,626	527,923	777,178	182,882	395,799	96,696	903,501
2011 ¹	4,855,242	1,459,016	709,973	492,743	714,165	187,029	367,615	81,566	843,134
2011 ²	5,227,317	1,594,449	732,419	527,467	761,415	196,671	409,086	99,862	905,946
2011 ³	5,460,328	1,678,656	745,948	566,671	796,195	200,919	420,942	105,667	945,331
2012 Q2 ¹	4,780,209	1,363,690	720,490	591,006	766,230	140,467	296,979	88,510	812,838
2012 Q2 ²	5,164,035	1,508,531	745,164	632,054	823,262	149,147	340,975	100,389	864,513
2012 Q2 ³	5,410,758	1,578,191	767,160	671,582	869,906	159,718	354,315	113,087	896,801
2012 Q3 ¹	4,815,934	1,368,962	691,297	563,047	741,802	202,974	354,185	83,002	810,666
2012 Q3 ²	5,159,137	1,492,329	725,118	605,702	798,063	212,276	383,993	92,980	848,678
2012 Q3 ³	5,396,138	1,566,540	743,347	650,973	828,613	221,970	396,797	101,655	886,243
2012 Q4 ¹	5,007,780	1,479,384	755,224	573,895	773,667	179,354	386,790	95,409	764,057
2012 Q4 ²	5,372,897	1,632,410	781,394	620,190	822,463	183,231	411,620	107,000	814,590
2012 Q4 ³	5,624,370	1,717,673	807,892	656,038	853,046	194,469	424,420	117,025	853,806

Industry group

1 Agriculture Forestry and Fishery (A,B)

2 Manufacturing (D)

3 Construction, Mining & Quarrying ,
Electricity,Gas and Water supply (C,E,F)

4 Wholesale and Retail Trade,Repair of Motor Vehicles,
Motorcycles and Personal and Household Goods (G)

7 Financial Intermediation and Real Estate,
Renting and Business Activities (J,K)

8 Public Administration and Defence,Compulsory Social Security (L)

9 Education (M)

Other

Hotels and Restaurants (H)

Transport, Storage and Communication (I)

Health and Social work (N)

Other Community,Social and Personal Service Activities

Extra Teritorial Organizations & bodies (O,Q)

Private Households with Employed Persons (P)

Miscellaneous Labour work

Industries not adequately described

Note: The tabulation groups based on ISIC (Rev.3) are indicated as A,B,C.....Q. Due to the limitations on reliability (based on CV),some of these groups have been combined.

¹ - Excluding Northern & Eastern provinces

³ - All the districts are included

² - Including Eastern province but Excluding Northern province

Table 6B - Currently Employed person by Industry group (Based on ISIC Third Revision) - Female

	Total	Industry group							
		1	2	3	4	7	8	9	Other
2005 ³	2,383,241	823,429	635,382	23,442	201,959	62,405	135,942	213,886	286,796
2006 ¹	2,494,679	945,054	679,218	19,669	237,723	65,125	105,908	190,262	251,720
2007 ¹	2,388,807	880,103	628,288	19,019	243,441	63,435	124,933	180,397	249,190
2008 ¹	2,511,429	955,701	638,638	22,619	244,376	73,390	117,939	210,878	247,887
2008 ²	2,614,856	979,331	664,830	24,731	259,277	74,060	126,829	227,037	258,762
2009 ¹	2,530,339	936,596	624,006	19,761	244,164	75,638	140,638	209,160	280,376
2009 ²	2,639,238	965,086	646,877	20,300	261,639	76,770	147,132	228,396	293,037
2010 ¹	2,465,265	942,490	594,830	19,784	256,013	79,273	135,476	185,708	251,692
2010 ²	2,574,608	972,523	617,710	20,474	273,493	81,512	140,960	204,876	263,059
2011 ¹	2,574,552	986,235	617,651	21,077	273,668	82,083	139,296	200,110	254,433
2011 ²	2,667,123	1,007,375	632,514	22,622	287,189	84,247	148,734	218,156	266,283
2011 ³	2,736,599	1,029,364	641,484	22,961	294,162	85,487	154,241	234,793	274,107
2012 Q2 ¹	2,340,309	757,302	626,303	25,738	241,094	88,949	117,415	206,122	277,386
2012 Q2 ²	2,445,619	779,955	645,470	26,582	259,165	93,279	125,382	219,446	296,339
2012 Q2 ³	2,525,535	799,746	658,628	30,253	266,084	95,351	131,656	238,533	305,284
2012 Q3 ¹	2,488,304	877,577	617,298	10,241	268,291	91,525	169,473	189,915	263,984
2012 Q3 ²	2,587,527	898,692	637,565	10,241	294,147	92,511	178,543	203,208	272,619
2012 Q3 ³	2,678,670	929,319	650,051	10,582	306,875	94,071	184,637	218,943	284,193
2012 Q4 ¹	2,571,356	914,250	660,161	25,123	253,586	79,487	197,892	186,705	254,151
2012 Q4 ²	2,676,523	941,077	676,829	25,123	281,509	80,325	203,248	206,033	262,379
2012 Q4 ³	2,750,639	966,344	685,294	25,332	291,556	83,670	209,419	216,340	272,683

These figures are to be treated with caution as the corresponding CV (Coefficient of variation) values are high.

Industry group

- 1 Agriculture Forestry and Fishery (A,B)
- 2 Manufacturing (D)
- 3 Construction, Mining & Quarrying ,
Electricity, Gas and Water supply (C,E,F)
- 4 Wholesale and Retail Trade, Repair of Motor Vehicles,
Motorcycles and Personal and Household Goods (G)
- 7 Financial Intermediation and Real Estate,
Renting and Business Activities (J,K)
- 8 Public Administration and Defence, Compulsory Social Security (L)
- 9 Education (M)

Other

- Hotels and Restaurants (H)
- Transport, Storage and Communication (I)
- Health and Social work (N)
- Other Community, Social and Personal Service Activities
- Extra Territorial Organizations & bodies (O,Q)
- Private Households with Employed Persons (P)
- Miscellaneous Labour work
- Industries not adequately described

Note: The tabulation groups based on ISIC (Rev.3) are indicated as A,B,C.....Q. Due to the limitations on reliability (based on CV), some of these groups have been combined.

¹ - Excluding Northern & Eastern provinces

² - Including Eastern province but Excluding Northern province

³ - All the districts are included

Table 6C: Historical table of currently employed population by major industry group - Both sexes

Major Industry group	Year																				
	2005 ³	2006 ¹	2007 ¹	2008 ¹	2008 ²	2009 ¹	2009 ²	2010 ¹	2010 ²	2011 ¹	2011 ²	2011 ³	2012 Q2 ¹	2012 Q2 ²	2012 Q2 ³	2012 Q3 ¹	2012 Q3 ²	2012 Q3 ³	2012 Q4 ¹	2012 Q4 ²	2012 Q4 ³
Total	7518007	7105322	7041874	7174706	7648305	7139537	7602414	7235641	7706593	7429794	7894439	8196927	7120518	7609654	7936294	7304236	7746661	8074806	7579136	8049420	8375009
Agriculture	2306039	2287268	2202098	2344415	2489731	2318621	2475921	2353599	2519905	2445251	2601824	2708020	2120992	2288487	2377937	2246540	2391021	2495859	2393634	2573487	2684018
Industry	1928014	1889953	1873857	1888004	2004880	1822685	1910318	1777130	1866733	1841444	1915022	1977063	1963537	2049269	2127622	1881882	1978624	2054953	2014404	2103536	2174557
Services	3283954	2928101	2965919	2942288	3153693	2998231	3216175	3104913	3319955	3143100	3377593	3511844	3035990	3271898	3430734	3175814	3377016	3523994	3171099	3372397	3516434

Table 6D: Historical table of currently employed population by major industry group (percentage) - Both sexes

Major Industry group	Year																				
	2005 ³	2006 ¹	2007 ¹	2008 ¹	2008 ²	2009 ¹	2009 ²	2010 ¹	2010 ²	2011 ¹	2011 ²	2011 ³	2012 Q2 ¹	2012 Q2 ²	2012 Q2 ³	2012 Q3 ¹	2012 Q3 ²	2012 Q3 ³	2012 Q4 ¹	2012 Q4 ²	2012 Q4 ³
Total	100.0	100.0	100.0	100.0	100.0	100.0	100.0	100.0	100.0	100.0	100.0	100.0	100.0	100.0	100.0	100.0	100.0	100.0	100.0	100.0	100.0
Agriculture	30.7	32.2	31.3	32.7	32.6	32.5	32.6	32.5	32.7	32.9	33.0	33.0	29.8	30.1	30.0	30.8	30.9	30.9	31.6	32.0	32.0
Industry	25.6	26.6	26.6	26.3	26.2	25.5	25.1	24.6	24.2	24.8	24.3	24.1	27.6	26.9	26.8	25.8	25.5	25.4	26.6	26.1	26.0
Services	43.7	41.2	42.1	41.0	41.2	42.0	42.3	42.9	43.1	42.3	42.8	42.8	42.6	43.0	43.2	43.5	43.6	43.6	41.8	41.9	42.0

Agriculture

1. Agriculture (A)
2. Forestry and Fishery (B)

Industries

1. Manufacturing (D)
2. Construction
3. Mining & Quarrying
4. Electricity, Gas and Water supply

Services

1. Wholesale and Retail Trade, Repair of Motor Vehicles, Motorcycles and Personal and Household Goods
2. Hotels and Restaurants
3. Transport, Storage and Communication
4. Financial Intermediation and Real Estate, Renting and Business Activities
5. Public Administration and Defence, Compulsory Social Security

¹ - Excluding Northern & Eastern provinces³ - All the districts are included² - Including Eastern province but Excluding Northern province

Table 7 - Currently Employed person by Occupation group (Based on ISCO 88)

Year	Total	Occupation group										
		1	2	3	4	5	6	7	8	9	10	0
2005 ³	7,518,007	120,491	471,200	403,904	300,322	515,909	574,416	1,561,884	1,216,224	531,439	1,760,335	61,883
2006 ¹	7,105,322	128,944	376,469	362,275	276,587	526,322	513,217	1,590,110	1,214,163	501,561	1,576,960	38,715
2007 ¹	7,041,874	123,290	366,668	381,596	283,703	494,515	508,488	1,503,669	1,201,598	563,927	1,574,113	40,306
2008 ¹	7,174,706	121,463	415,993	398,489	299,331	477,055	546,087	1,603,701	1,165,096	526,921	1,576,276	44,295
2008 ²	7,648,305	126,636	448,659	424,802	308,632	498,271	604,974	1,699,212	1,255,470	555,896	1,673,147	52,607
2009 ¹	7,139,537	117,080	421,793	372,116	304,686	471,279	550,658	1,607,477	1,106,431	500,259	1,619,891	67,867
2009 ²	7,602,414	119,190	458,305	392,898	313,734	509,501	606,492	1,705,701	1,175,137	530,788	1,717,903	72,765
2010 ¹	7,235,641	115,675	395,550	376,112	304,326	477,572	577,655	1,611,306	1,132,093	537,286	1,641,844	66,223
2010 ²	7,706,593	116,910	434,260	394,419	314,984	523,201	626,716	1,715,262	1,206,369	560,407	1,739,505	74,559
2011 ¹	7,429,794	133,795	438,056	365,722	320,714	521,444	620,641	1,703,022	1,183,874	543,163	1,541,136	58,227
2011 ²	7,894,439	137,833	479,536	391,469	330,665	532,029	685,053	1,807,120	1,249,755	567,140	1,646,840	67,000
2011 ³	8,196,927	138,792	506,060	410,040	339,486	552,011	710,870	1,889,435	1,300,277	586,526	1,691,918	71,512
2012 Q2 ¹	7,120,518	111,492	447,354	362,297	328,420	288,700	823,348	1,457,667	1,248,461	628,312	1,392,341	32,125
2012 Q2 ²	7,609,654	112,878	479,350	402,791	338,725	311,223	894,967	1,590,661	1,334,971	660,053	1,446,896	37,138
2012 Q2 ³	7,936,294	113,958	517,240	418,353	351,422	322,654	940,905	1,656,239	1,394,067	683,564	1,500,248	37,644
2012 Q3 ¹	7,304,238	130,063	422,536	434,158	348,694	272,320	815,426	1,540,300	1,205,565	648,785	1,443,236	43,156
2012 Q3 ²	7,746,663	131,981	459,993	469,421	359,966	289,254	864,748	1,666,843	1,278,827	678,362	1,501,256	46,012
2012 Q3 ³	8,074,808	134,677	496,560	485,077	367,895	292,401	888,009	1,762,502	1,346,331	701,145	1,550,347	49,862
2012 Q4 ¹	7,579,136	177,668	473,953	433,609	339,730	306,556	715,459	1,537,965	1,279,227	658,296	1,620,279	36,395
2012 Q4 ²	8,049,420	182,450	511,046	460,618	344,969	313,525	776,388	1,708,702	1,339,292	689,307	1,681,641	41,482
2012 Q4 ³	8,375,009	182,996	536,219	479,858	359,016	314,425	801,760	1,817,291	1,395,285	721,178	1,721,853	45,128

Occupation group

- | | |
|---|--|
| 1 Senior Officials and Managers | 7 Skilled Agricultural and Fishery workers |
| 2 Professionals | 8 Craft and Related workers |
| 3 Technical and Associate Professionals | 9 Plant and Machine operators and Assemblers |
| 4 Clerks | 10 Elementary occupations |
| 5 Proprietors and Managers of Enterprises | 0 Unidentified |
| 6 Sales and Service workers | |

▨ These figures are to be treated with caution as the corresponding CV (Coefficient of variation) values are high.

Note: It is to be noted here that these occupation groups are based on ISCO - 88, but they are not necessarily the **Major Groups** of ISCO - 88 classification

¹ - Excluding Northern & Eastern provinces

³ - All the districts are included

² - Including Eastern province but Excluding Northern province

⁴ - Excluding Mulathivu, Kilinochchi districts.

Table 7A - Currently Employed person by Occupation group - Male (Based on ISCO 88)

Year	Total	Occupation group										
		1	2	3	4	5	6	7	8	9	10	0
2005 ³	5,134,765	87,788	187,002	266,866	159,566	406,137	418,628	1,013,877	801,448	484,351	1,249,168	59,935
2006 ¹	4,610,643	101,399	146,344	238,819	143,606	419,443	314,226	966,263	743,733	444,703	1,055,753	36,354
2007 ¹	4,653,067	91,026	147,844	258,111	138,384	379,768	318,994	925,933	779,097	504,603	1,070,890	38,418
2008 ¹	4,663,277	90,314	154,443	275,928	161,252	364,206	339,828	975,507	731,382	478,825	1,050,236	41,356
2008 ²	5,033,449	94,075	168,152	296,103	167,400	380,629	385,895	1,049,917	799,554	503,286	1,139,158	49,280
2009 ¹	4,609,198	94,072	150,660	241,033	151,532	350,875	354,709	995,412	704,257	450,086	1,056,823	59,738
2009 ²	4,963,176	95,394	168,781	254,607	156,245	375,649	396,056	1,070,983	758,317	477,738	1,145,231	64,176
2010 ¹	4,770,376	87,931	148,759	254,265	168,305	357,254	391,654	1,006,090	740,280	487,749	1,067,383	60,705
2010 ²	5,131,986	89,166	165,516	268,272	174,664	387,776	426,082	1,085,264	800,647	509,945	1,155,776	68,877
2011 ¹	4,855,242	99,525	170,239	244,470	176,892	402,221	408,877	1,041,098	767,047	478,661	1,010,446	55,767
2011 ²	5,227,317	102,513	192,929	262,239	182,076	409,853	458,319	1,129,567	821,468	500,663	1,103,601	64,089
2011 ³	5,460,328	103,472	201,104	275,758	186,794	426,309	477,910	1,195,878	864,946	518,445	1,141,458	68,256
2012 Q2 ¹	4,780,209	77,602	168,009	237,211	186,782	219,643	559,695	959,170	858,310	554,612	929,669	29,507
2012 Q2 ²	5,164,035	78,988	182,409	262,605	194,327	237,093	617,953	1,075,661	925,317	584,572	972,819	32,291
2012 Q2 ³	5,410,758	80,068	198,699	271,930	202,538	248,524	653,744	1,129,089	971,919	606,310	1,015,288	32,650
2012 Q3 ¹	4,815,934	94,236	167,461	280,822	171,846	180,564	582,107	969,397	824,710	563,559	942,011	39,222
2012 Q3 ²	5,159,137	96,155	189,859	305,410	180,999	191,497	617,494	1,080,636	878,657	590,438	987,977	40,015
2012 Q3 ³	5,396,138	97,380	205,638	315,921	185,505	193,696	635,704	1,147,647	934,083	613,221	1,024,574	42,769
2012 Q4 ¹	5,007,780	126,172	187,992	305,651	172,549	247,230	470,632	954,261	846,091	600,181	1,063,570	33,451
2012 Q4 ²	5,372,897	130,954	203,381	320,433	176,237	250,721	516,871	1,096,239	891,062	631,192	1,117,267	38,538
2012 Q4 ³	5,624,370	131,500	217,814	331,475	186,091	251,621	535,908	1,178,020	940,908	662,723	1,149,215	39,094

Occupation group

1 Senior Officials and Managers

2 Professionals

3 Technical and Associate Professionals

4 Clerks

5 Proprietors and Managers of Enterprises

6 Sale and Service workers

7 Skilled Agricultural and Fishery workers

8 Craft and Related workers

9 Plant and Machine operators and Assemblers

10 Elementary occupations

0 Unidentified

▨ These figures are to be treated with caution as the corresponding CV (Coefficient of variation) values are high.

Note: It is to be noted here that these occupation groups are based on ISCO - 88, but they are not necessarily the **Major Groups** of ISCO - 88 classification

¹ - Excluding Northern & Eastern provinces

² - Including Eastern province but Excluding Northern province

³ - All the districts are included

⁴ - Excluding Mulathivu, Kilinochchi districts.

Table 7B - Currently Employed person by Occupation group - Female (Based on ISCO 88)

Year	Occupation group											
	Total	1	2	3	4	5	6	7	8	9	10	0
2005 ³	2,383,241	32,702	284,198	137,038	140,756	109,772	155,788	548,007	414,776	47,088	511,167	1,949
2006 ¹	2,494,679	27,544	230,126	123,456	132,981	106,879	198,990	623,847	470,430	56,858	521,207	2,360
2007 ¹	2,388,807	32,265	218,824	123,485	145,319	114,747	189,494	577,736	422,502	59,324	503,223	1,888
2008 ¹	2,511,429	31,148	261,549	122,561	138,079	112,849	206,258	628,193	433,715	48,095	526,040	2,940
2008 ²	2,614,856	32,560	280,507	128,699	141,231	117,642	219,079	649,295	455,917	52,609	533,989	3,327
2009 ¹	2,530,339	23,008	271,134	131,083	153,154	120,404	195,949	612,065	402,173	50,172	563,067	8,129
2009 ²	2,639,238	23,796	289,523	138,291	157,489	133,852	210,437	634,719	416,820	53,050	572,671	8,590
2010 ¹	2,465,265	27,743	246,791	121,847	136,022	120,318	186,001	605,216	391,812	49,537	574,461	5,518
2010 ²	2,574,608	27,743	268,744	126,148	140,320	135,425	200,634	629,998	405,722	50,462	583,729	5,683
2011 ¹	2,574,552	34,270	267,817	121,253	143,822	119,223	211,764	661,924	416,827	64,502	530,690	2,460
2011 ²	2,667,123	35,320	286,607	129,230	148,589	122,176	226,734	677,553	428,287	66,477	543,239	2,911
2011 ³	2,736,599	35,320	304,956	134,282	152,692	125,702	232,960	693,557	435,331	68,081	550,460	3,256
2012 Q2 ¹	2,340,309	33,890	279,345	125,086	141,638	69,058	263,653	498,498	390,151	73,700	462,672	2,619
2012 Q2 ²	2,445,619	33,890	296,941	140,187	144,399	74,130	277,013	515,000	409,654	75,481	474,077	4,847
2012 Q2 ³	2,525,535	33,890	318,541	146,424	148,883	74,130	287,161	527,150	422,148	77,254	484,960	4,994
2012 Q3 ¹	2,488,304	35,827	255,075	153,336	176,848	91,755	233,319	570,903	380,855	85,226	501,225	3,934
2012 Q3 ²	2,587,527	35,827	270,134	164,011	178,967	97,757	247,254	586,206	400,170	87,924	513,279	5,997
2012 Q3 ³	2,678,670	37,297	290,922	169,157	182,390	98,706	252,305	614,856	412,248	87,924	525,774	7,093
2012 Q4 ¹	2,571,356	51,496	285,961	127,958	167,180	59,326	244,828	583,704	433,136	58,115	556,709	2,944
2012 Q4 ²	2,676,523	51,496	307,664	140,184	168,732	62,804	259,517	612,463	448,230	58,115	564,374	2,944
2012 Q4 ³	2,750,639	51,496	318,405	148,383	172,925	62,804	265,851	639,271	454,376	58,455	572,638	6,034

Occupation group

1 Senior Officials and Managers

2 Professionals

3 Technical and Associate Professionals

4 Clerks

5 Proprietors and Managers of Enterprises

6 Sale and Service workers

7 Skilled Agricultural and Fishery workers

8 Craft and Related workers

9 Plant and Machine operators and Assemblers

10 Elementary occupations

0 Unidentified

▨ These figures are to be treated with caution as the corresponding CV (Coefficient of variation) values are high.

Note: It is to be noted here that these occupation groups are based on ISCO - 88, but they are not necessarily the **Major Groups** of ISCO - 88 classification

¹ - Excluding Northern & Eastern provinces

² - Including Eastern province but Excluding Northern province

³ - All the districts are included

⁴ - Excluding Mulathivu, Kilinochchi districts.

TABLE 8 - CURRENTLY EMPLOYED PERSONS BY HOURS PER WEEK ACTUALLY WORKED AT THE MAIN JOB AND MAJOR INDUSTRIAL GROUP (PERCENTAGE) - BOTH SEXES

(2012 4th quarter)

MAJOR INDUSTRIAL GROUP	TOTAL	0 *	1 - 9	10 - 19	20 - 29	30 - 39	40 - 49	50 & OVER
Total	100.0	4.4	1.3	4.4	8.3	13.3	37.7	30.6
1	100.0	5.9	3.1	8.4	14.3	17.7	34.6	16.0
2	100.0	3.5	..	3.7	7.5	9.5	40.2	35.1
3	100.0	5.3	9.4	11.7	39.1	30.7
4	100.0	*	*	..	4.3	8.5	31.3	52.3
5	100.0	*	..	*	*	*	*	62.4
6	100.0	*	*	*	*	6.3	25.9	58.1
7	100.0	*	..	*	*	*	61.9	27.9
8	100.0	*	*	9.1	60.0	26.8
9	100.0	12.9	..	*	*	45.4	22.5	*
10	100.0	*	..	*	..	*	50.3	40.0
11	100.0	*	*	*	*	*	42.1	36.3
12	100.0	*	..	*	*	*	*	51.5
13	100.0	*	*	*	*	*	45.7	*
14

* Has a job but not at work during the reference week

.. Negligible

** Reliable estimates cannot be provided.

Industry group

1. Agriculture Forestry and Fishery (A,B)

2. Manufacturing (D)

3. Construction, Mining & Quarrying ,
Electricity, Gas and Water supply (C,E,F)

4. Wholesale and Retail Trade, Repair of Motor Vehicles,
Motorcycles and Personal and Household Goods (G)

5. Hotels and Restaurants (H)

6. Transport, Storage and Communication (I)

7. Financial Intermediation and Real Estate,
Renting and Business Activities (J,K)

8. Public Administration and Defence, Compulsory Social Security (L)

9. Education (M)

10. Health and Social work (N)

11. Other Community, Social and Personal Service Activities
Extra Territorial Organizations & bodies (O,Q)

12. Private Households with Employed Persons (P)


13. Miscellaneous Labour work

14. Industries not adequately described

Note: The tabulation groups based on ISIC (Rev.3) are indicated as A,B,C.....Q. Due to the limitations on reliability (based on CV), some of these groups have been combined.

**TABLE 9 - HISTORICAL TABLE OF CURRENTLY UNEMPLOYED PERSONS BY AGE GROUPS
(PERCENTAGE) - BOTH SEXES**

YEAR	TOTAL	AGE GROUPS				
		15 - 19 YRS	20 - 24 YRS	25 - 29 YRS	30 - 39 YRS	40 + YRS
1990 ¹	100.0	20.3	40.3	19.3	13.2	7.1
1991 ¹	100.0	19.3	42.2	16.7	15.8	6.0
1992 ¹	100.0	19.2	40.9	20.4	13.4	6.1
1993 ¹	100.0	20.4	38.5	18.9	15.5	6.8
1994 ¹	100.0	22.4	41.2	15.6	15.5	5.5
1995 ¹	100.0	21.1	38.2	20.1	15.1	5.5
1996 ¹	100.0	24.0	39.3	18.1	14.3	4.3
1997 ¹	100.0	22.5	41.5	19.0	12.7	4.3
1998 ¹	100.0	21.9	40.8	17.6	13.6	6.0
1999 ¹	100.0	23.9	40.5	17.2	12.5	5.9
2000 ¹	100.0	19.5	44.4	18.4	11.9	5.8
2001 ¹	100.0	21.2	45.4	17.8	10.4	5.1
2002 ¹	100.0	19.8	47.1	16.6	11.0	5.5
2003 ²	100.0	19.9	45.8	17.2	11.6	5.6
2004 ⁴	100.0	18.1	45.9	17.4	11.7	6.8
2005 ³	100.0	19.5	44.8	16.4	12.2	7.1
2006 ¹	100.0	17.5	39.3	21.5	11.9	9.8
2007 ¹	100.0	15.7	41.2	19.7	13.1	10.4
2008 ¹	100.0	15.9	38.4	20.9	13.7	11.2
2008 ²	100.0	15.8	38.4	21.5	13.6	10.6
2009 ¹	100.0	14.6	37.1	21.0	15.2	12.1
2009 ²	100.0	14.5	37.5	21.3	15.1	11.6
2010 ¹	100.0	15.0	38.0	21.0	15.0	11.0
2010 ²	100.0	14.8	38.7	21.2	14.7	10.6
2011 ¹	100.0	13.1	42.7	19.9	15.9	8.4
2011 ²	100.0	13.5	41.8	20.9	15.6	8.2
2011 ³	100.0	12.8	42.5	20.6	15.6	8.5
2012 Q2 ¹	100.0	14.2	43.0	20.3	15.4	7.2
2012 Q2 ²	100.0	13.6	43.8	20.6	15.1	6.9
2012 Q2 ³	100.0	13.3	43.5	21.7	14.8	6.6
2012 Q3 ¹	100.0	14.7	31.8	21.0	17.8	14.7
2012 Q3 ²	100.0	14.8	33.8	20.4	17.1	14.0
2012 Q3 ³	100.0	14.5	34.6	20.2	17.3	13.3
2012 Q4 ¹	100.0	15.2	42.7	14.5	14.9	12.8
2012 Q4 ²	100.0	15.0	43.5	13.9	15.2	12.4
2012 Q4 ³	100.0	14.7	43.9	14.5	14.7	12.1

 These figures are to be treated with caution as the corresponding CV (Coefficient of variation) values are high.

¹ - Excluding Northern & Eastern provinces

² - Including Eastern province but Excluding Northern province

³ - All the districts are included

⁴ - Excluding Mulathivu, Kilinochchi districts.

**TABLE 9A - HISTORICAL TABLE OF CURRENTLY UNEMPLOYED PERSONS BY AGE GROUPS
(PERCENTAGE) - MALE**

YEAR	TOTAL	AGE GROUPS				
		15 - 19 YRS	20 - 24 YRS	25 - 29 YRS	30 - 39 YRS	40+ YRS
1998 ¹	100.0	27.7	39.6	16.5	9.5	6.7
1999 ¹	100.0	27.6	40.6	14.3	9.3	8.2
2000 ¹	100.0	24.0	46.4	15.2	9.1	5.3
2001 ¹	100.0	25.4	46.3	15.0	7.1	6.2
2002 ¹	100.0	22.2	49.1	13.5	8.3	6.9
2003 ²	100.0	22.7	47.6	14.8	8.3	6.6
2004 ⁴	100.0	20.8	45.4	15.4	10.1	8.3
2005 ⁵	100.0	21.8	44.3	15.0	12.5	6.3
2006 ¹	100.0	21.2	40.1	18.4	8.3	11.9
2007 ¹	100.0	19.9	40.7	16.0	10.2	13.1
2008 ¹	100.0	19.8	37.5	18.2	9.7	14.9
2008 ²	100.0	19.4	37.8	19.5	9.4	13.9
2009 ¹	100.0	18.2	35.2	19.0	12.6	15.0
2009 ²	100.0	17.9	36.4	18.9	12.4	14.4
2010 ¹	100.0	19.8	40.4	15.1	12.1	12.6
2010 ²	100.0	19.6	41.2	15.5	11.7	12.0
2011 ¹	100.0	17.8	44.7	15.7	14.1	7.8
2011 ²	100.0	18.5	44.6	16.0	13.2	7.7
2011 ⁵	100.0	17.6	44.9	16.7	13.1	7.6
2012 Q2 ¹	100.0	17.1	50.0	14.4	12.5	6.0
2012 Q2 ²	100.0	16.9	48.0	16.6	12.3	6.2
2012 Q2 ⁵	100.0	16.7	47.8	17.6	11.9	6.0
2012 Q3 ¹	100.0	20.2	33.3	23.3	11.6	11.6
2012 Q3 ²	100.0	20.1	35.8	21.6	10.7	11.7
2012 Q3 ⁵	100.0	19.8	36.2	21.6	11.0	11.4
2012 Q4 ¹	100.0	23.5	37.8	11.8	14.8	12.1
2012 Q4 ²	100.0	22.4	39.8	11.3	15.1	11.4
2012 Q4 ⁵	100.0	22.0	40.4	12.1	14.4	11.1

**TABLE 9B - HISTORICAL TABLE OF CURRENTLY UNEMPLOYED PERSONS BY AGE GROUPS
(PERCENTAGE) - FEMALE**

YEAR	TOTAL	AGE GROUPS				
		15 - 19 YRS	20 - 24 YRS	25 - 29 YRS	30 - 39 YRS	40+ YRS
1998 ¹	100.0	17.1	41.8	18.6	17.0	5.4
1999 ¹	100.0	20.2	40.5	20.0	15.6	3.7
2000 ¹	100.0	15.1	42.3	21.5	14.8	6.3
2001 ¹	100.0	16.7	44.5	20.9	14.1	3.8
2002 ¹	100.0	17.5	45.1	19.5	13.7	4.2
2003 ²	100.0	17.2	44.1	19.4	14.7	4.6
2004 ⁴	100.0	15.7	46.4	19.3	13.3	5.3
2005 ⁵	100.0	17.3	45.3	17.6	11.9	7.8
2006 ¹	100.0	14.4	38.7	24.2	14.9	7.9
2007 ¹	100.0	11.9	41.5	23.0	15.6	8.0
2008 ¹	100.0	12.7	39.1	23.1	16.9	8.2
2008 ²	100.0	12.9	38.9	23.2	17.0	8.0
2009 ¹	100.0	11.4	38.8	22.8	17.5	9.5
2009 ²	100.0	11.5	38.5	23.5	17.5	9.0
2010 ¹	100.0	10.8	36.0	26.1	17.5	9.6
2010 ²	100.0	10.7	36.5	26.1	17.4	9.3
2011 ¹	100.0	9.4	41.2	23.2	17.2	9.0
2011 ²	100.0	9.8	39.7	24.6	17.3	8.6
2011 ⁵	100.0	9.3	40.7	23.4	17.5	9.1
2012 Q2 ¹	100.0	11.0	35.3	26.7	18.5	8.5
2012 Q2 ²	100.0	10.0	39.2	24.9	18.2	7.7
2012 Q2 ⁵	100.0	9.7	39.1	26.0	17.9	7.3
2012 Q3 ¹	100.0	10.2	30.6	19.1	22.9	17.2
2012 Q3 ²	100.0	10.0	31.9	19.3	22.8	16.0
2012 Q3 ⁵	100.0	10.0	33.3	19.0	22.7	14.9
2012 Q4 ¹	100.0	8.1	46.9	16.7	14.9	13.4
2012 Q4 ²	100.0	8.5	46.8	16.2	15.3	13.2
2012 Q4 ⁵	100.0	8.5	47.0	16.6	15.0	12.9

These figures are to be treated with caution as the corresponding CV (Coefficient of variation) values are high.

¹ - Excluding Northern & Eastern provinces

³ - All the districts are included

² - Including Eastern province but Excluding Northern province

⁴ - Excluding Mulathivu, Kilinochchi districts.

TABLE 10 - HISTORICAL TABLE OF CURRENTLY UNEMPLOYED PERSONS BY LEVEL OF EDUCATION (PERCENTAGE) - BOTH SEXES

YEAR	TOTAL	LEVEL OF EDUCATION			
		GRADE 5 & BELOW	GRADES 6 - 10	GCE(O/L) NCGE	GCE(A/L) HNCE & ABOVE
1990 ¹	100.0	8.5	49.7	26.5	15.4
1991 ¹	100.0	9.0	45.7	30.3	15.1
1992 ¹	100.0	9.2	50.5	27.0	13.7
1993 ¹	100.0	8.3	44.9	28.7	18.0
1994 ¹	100.0	8.6	44.9	28.3	18.2
1995 ¹	100.0	5.5	47.1	29.1	18.4
1996 ¹	100.0	7.9	47.1	26.1	19.0
1997 ¹	100.0	5.7	44.7	28.2	21.4
1998 ¹	100.0	5.8	44.2	27.1	22.9
1999 ¹	100.0	4.4	41.9	29.2	24.5
2000 ¹	100.0	3.1	45.6	26.0	25.3
2001 ¹	100.0	3.6	40.7	27.3	28.4
2002 ¹	100.0	4.7	40.7	25.2	29.4
2003 ²	100.0	4.8	40.2	26.1	28.9
2004 ⁴	100.0	5.4	36.6	26.2	31.7
2005 ³	100.0	4.5	37.2	28.6	29.7
2006 ¹	100.0	4.6	41.9	26.6	26.9
2007 ¹	100.0	4.4	41.0	22.0	32.6
2008 ¹	100.0	4.2	41.2	22.8	31.8
2008 ²	100.0	4.5	39.3	23.4	32.8
2009 ¹	100	4.4	40.3	22.7	32.6
2009 ²	100.0	4.3	39.9	23.1	32.7
2010 ¹	100.0	2.8	35.0	22.8	39.4
2010 ²	100.0	2.7	34.9	22.7	39.7
2011 ¹	100.0	2.3	38.8	20.1	38.8
2011 ²	100.0	2.8	37.4	19.8	39.9
2011 ³	100.0	2.7	38.0	19.9	39.4
2012 Q2 ¹	100.0	..	36.1	29.7	34.2
2012 Q2 ²	100.0	..	36.3	30.2	33.5
2012 Q2 ³	100.0	..	35.7	29.8	34.4
2012 Q3 ¹	100.0	3.6	38.0	30.7	27.6
2012 Q3 ²	100.0	3.7	35.9	30.4	30.0
2012 Q3 ³	100.0	3.6	36.4	29.1	30.9
2012 Q4 ¹	100.0	3.5	41.1	21.7	33.7
2012 Q4 ²	100.0	4.0	40.6	21.8	33.6
2012 Q4 ³	100.0	3.9	39.9	23.0	33.3

.. Negligible

▨ These figures are to be treated with caution as the corresponding CV (Coefficient of variation) values are high.

¹ - Excluding Northern & Eastern provinces

³ - All the districts are included

² - Including Eastern province but Excluding Northern province

⁴ - Excluding Mulathivu, Kilinochchi districts.

TABLE 10A - HISTORICAL TABLE OF CURRENTLY UNEMPLOYED PERSONS BY LEVEL OF EDUCATION (PERCENTAGE) - MALE

YEAR	TOTAL	LEVEL OF EDUCATION			
		GRADE 5 & BELOW	GRADES 6 - 10	GCE(O/L) NCGE	GCE(A/L) HNCE & ABOVE
1998 ¹	100.0	6.7	54.8	24.7	13.9
1999 ¹	100.0	4.8	48.3	29.1	17.8
2000 ¹	100.0	3.9	54.7	26.0	15.4
2001 ¹	100.0	4.4	50.9	25.2	19.5
2002 ¹	100.0	5.6	50.1	24.7	19.6
2003 ²	100.0	5.5	47.3	27.7	19.5
2004 ⁴	100.0	7.0	44.0	27.4	21.6
2005 ³	100.0	5.2	44.9	29.1	20.8
2006 ¹	100.0	6.2	48.9	26.6	18.3
2007 ¹	100.0	5.8	49.5	24.5	20.3
2008 ¹	100.0	5.3	52.2	21.7	20.8
2008 ²	100.0	5.3	49.7	23.1	21.9
2009 ¹	100.0	4.5	49.7	24.6	21.3
2009 ²	100.0	4.4	48.0	25.3	22.3
2010 ¹	100.0	3.6	41.4	25.2	29.8
2010 ²	100.0	3.4	40.4	25.3	30.9
2011 ¹	100.0	2.1	48.5	20.6	28.7
2011 ²	100.0	2.1	47.5	20.5	29.9
2011 ³	100.0	2.0	47.8	20.4	29.8
2012 Q2 ¹	100.0	..	40.4	39.9	19.8
2012 Q2 ²	100.0	..	40.7	39.5	19.9
2012 Q2 ³	100.0	..	39.9	38.7	21.4
2012 Q3 ¹	100.0	2.5	48.1	29.4	20.0
2012 Q3 ²	100.0	2.3	45.1	30.2	22.4
2012 Q3 ³	100.0	2.2	44.6	29.2	23.9
2012 Q4 ¹	100.0	3.7	61.0	19.0	16.4
2012 Q4 ²	100.0	4.1	58.1	19.1	18.6
2012 Q4 ³	100.0	4.0	56.3	20.7	19.0

TABLE 10B - HISTORICAL TABLE OF CURRENTLY UNEMPLOYED PERSONS BY LEVEL OF EDUCATION (PERCENTAGE) - FEMALE

YEAR	TOTAL	LEVEL OF EDUCATION			
		GRADE 5 & BELOW	GRADES 6 - 10	GCE(O/L) NCGE	GCE(A/L) HNCE & ABOVE
1998 ¹	100.0	5.1	35.4	29.1	30.5
1999 ¹	100.0	4.0	35.5	29.3	31.2
2000 ¹	100.0	2.3	36.3	26.1	35.3
2001 ¹	100.0	2.6	29.7	29.7	38.0
2002 ¹	100.0	3.9	31.4	25.6	39.1
2003 ²	100.0	4.0	33.5	24.6	37.8
2004 ⁴	100.0	3.9	29.7	25.0	41.3
2005 ³	100.0	4.0	29.9	28.1	38.0
2006 ¹	100.0	3.1	35.9	26.7	34.3
2007 ¹	100.0	3.2	33.5	19.8	43.4
2008 ¹	100.0	3.3	32.3	23.7	40.7
2008 ²	100.0	3.8	31.0	23.6	41.6
2009 ¹	100.0	4.4	31.8	20.9	42.9
2009 ²	100.0	4.3	32.5	21.1	42.1
2010 ¹	100.0	2.0	29.5	20.7	47.8
2010 ²	100.0	2.1	30.2	20.5	47.2
2011 ¹	100.0	2.4	31.2	19.8	46.6
2011 ²	100.0	3.4	29.8	19.3	47.4
2011 ³	100.0	3.3	30.7	19.5	46.5
2012 Q2 ¹	100.0	..	31.4	18.4	50.2
2012 Q2 ²	100.0	..	31.7	20.2	48.1
2012 Q2 ³	100.0	..	31.4	20.7	47.9
2012 Q3 ¹	100.0	4.6	29.1	32.0	34.4
2012 Q3 ²	100.0	5.0	27.6	30.6	36.7
2012 Q3 ³	100.0	4.8	29.3	29.1	36.8
2012 Q4 ¹	100.0	3.4	24.0	24.0	48.5
2012 Q4 ²	100.0	3.8	25.5	24.1	46.6
2012 Q4 ³	100.0	3.8	25.9	24.9	45.4

.. Negligible

▨ These figures are to be treated with caution as the corresponding CV (Coefficient of variation) values are high.

¹ - Excluding Northern & Eastern provinces

³ - All the districts are included

² - Including Eastern province but Excluding Northern province

⁴ - Excluding Mulathivu, Kilinochchi districts.

TABLE 11 - CURRENTLY UNEMPLOYED PERSONS BY SEX AND DURATION OF UNEMPLOYMENT

Sex	Total	Duration		
		Less than 6 months	6 to less than 12 months	12+ months
Both sexes	340,974	130,977	84,562	125,436
%	100.0	38.4	24.8	36.8
Male	156,907	64,195	36,046	56,666
%	100.0	40.9	23.0	36.1
Female	184,068	66,782	48,516	68,769
%	100.0	36.3	26.4	37.4

STANDARD ERROR AND COEFFICIENT OF VARIATION OF SELECTED VARIABLES

	(2012 4 th quarter)					
	Estimated Value	Standard Error	Coefficient of Variation (%)	Estimated Value (Ratio)	Standard Error	Coefficient of Variation (%)
General labour force characteristics						
Population (10 years & over)	18,123,364	198,775	1.10	-	-	-
Employed Population	8,375,009	124,445	1.49	-	-	-
Unemployed Population	340,974	25,375	7.4	-	-	-
Employment Rate	-	-	-	96.1	0.283	0.295
Unemployment Rate	-	-	-	3.9	0.283	7.237
Labour Force	8,715,983	127,982	1.47	-	-	-
Not in Labour Force	9,407,381	136,390	1.45	-	-	-
Employed persons by major industry Groups						
1	2,684,018	105,705	3.94	-	-	-
2	1,493,186	55,775	3.74	-	-	-
3	681,371	36,544	5.36	-	-	-
4	1,144,602	53,642	4.69	-	-	-
5	122,763	14,495	11.81	-	-	-
6	513,353	27,464	5.35	-	-	-
7	278,140	21,371	7.68	-	-	-
8	633,839	37,539	5.92	-	-	-
9	333,365	23,888	7.17	-	-	-
10	127,623	13,296	10.42	-	-	-
11	171,501	15,467	9.02	-	-	-
12	66,318	10,702	16.14	-	-	-
13	123,565	19,307	15.63	-	-	-
14	1,365	1,365	100	-	-	-
Unemployed persons by level of education						
Below grade 5	13,295	3,783	28.5	-	-	-
Grade 5 - 9/Year 6 - 10	135,964	15,350	11.29	-	-	-
G.C.E.(O/L)/N.C.G.E.	78,323	10,626	13.57	-	-	-
G.C.E.(A/L)/H.N.C.E. & above	113,393	13,011	11.47	-	-	-

Industry group

- | | |
|---|---|
| 1. Agriculture Forestry and Fishery (A,B) | 8. Public Administration and Defence,Compulsory Social Security (L) |
| 2. Manufacturing (D) | 9. Education (M) |
| 3. Construction, Mining & Quarrying ,
Electricity,Gas and Water supply (C,E,F) | 10. Health and Social work (N) |
| 4. Wholesale and Retail Trade,Repair of Motor Vehicles,
Motorcycles and Personal and Household Goods (G) | 11. Other Community,Social and Personal Service Activities
Extra Teritorial Organizations & bodies (O,Q) |
| 5. Hotels and Restaurants (H) | 12. Private Households with Employed Persons (P) |
| 6. Transport, Storage and Communication (I) | 13. Miscellaneous Labour work |
| 7. Financial Intermediation and Real Estate,
Renting and Business Activities (J,K) | 14. Industries not adequately described |

Explanatory Notes

Coverage

Sri Lanka Labour Force Survey was designed to measure the levels and trends of employment, unemployment and labour force in Sri Lanka. This survey is being conducted quarterly, since the first quarter of 1990.

This quarterly survey of households is conducted through a scientifically selected sample designed to represent the civilian non-institutional population. Respondents are interviewed to obtain information about the employment status etc. of each member of the household 10 years of age and older.

The field work of the survey is done during the third week of the each month, Monday through Sunday. This is known as the "survey week". The inquiry relates to activity or status are referred in the preceding week of the survey week; referred to as the "reference week".

The concepts and definitions underlying labour force data are as follows.

Concepts and definitions

1. **Labour force** : The labour force is composed of the economically active population 10 years of age and over.
2. **The Economically Active Population** : is defined as those persons who are/were employed or unemployed during the reference period of the survey.
3. **Employed** : Persons, who during the reference period, worked as paid employees, employers, own account workers (self employed), or unpaid family workers are said to be employed. This includes persons with a job but not at work during the reference period.
4. **Unemployed** : Persons who are seeking and available for work, but had no employment during the reference period.
5. **Currently Economically Active** : A person who was employed or unemployed during the current reference period is considered to be currently economically active.
6. **Not in the Labour Force (not economically active)** : Persons who were neither working nor available/looking for work are classified as "not in the labour force". Persons are not in the labour force for such reasons as: full time care of the household, full – time students, retired or old age, infirmed or disabled, or are not interested in working for one reason or another. Current and Usual definitions apply.
7. **Criteria for classification of underemployment:** In order to classify an employed persons as visibly underemployed,

(i) If the person has worked less than the normal duration in his/her main activity

In Sri Lanka scenario, 35 hours per week is taken as the cut-off point applicable to all workers, except government teachers. As in practice, though teachers do have a normal duration of work which is below the general cut-off point, they should be on a full time schedule according to the nature of their job. Further, those who do have a secondary job, or those who are employers, were considered as having worked the normal duration in their respective activity.

Therefore, if the person has worked less than the normal duration in his/her activity (as described above), then the person is further questioned to ascertain whether he/She is prepared and available for further work if provided. Such persons are considered underemployed in their respective employment.

(ii) If the person has worked more than the normal duration in his/her activity

If the person has worked even more than 35 hours as usually, but he has worked less than 35 hours actually in the reference period, only due to the off season or bad weather, such persons were also further questioned to check their underemployment situation, considering them as a special category.

8. Informal Sector Employment

In order to classify a person to be employed in informal sector employment, following information were used.

- (i) Registration of the organization
- (ii) Accounts keeping practices of the organization
- (iii) Total number of regular employees of the organization.

Reliability of the estimates

Statistics based on the quarterly labour force data are subject to both sampling and non - sampling errors. When a sample rather than the entire population is surveyed, there is a chance that the sample estimates may differ from the "true" population values they represent.

The exact differences, or sampling error, varies depending on the particular sample selected, and this variability is measured by the standard error of the estimate. There is about a 95 percent chance, or level of confidence, that an estimate based on a sample will differ by no more than 1.96 standard errors from the " true" population value, because of sampling error. Analyses relating to the Labour Force Survey are generally conducted at the 95 percent level of confidence.

For example, the confidence interval for the quarterly unemployment rate is on the order of

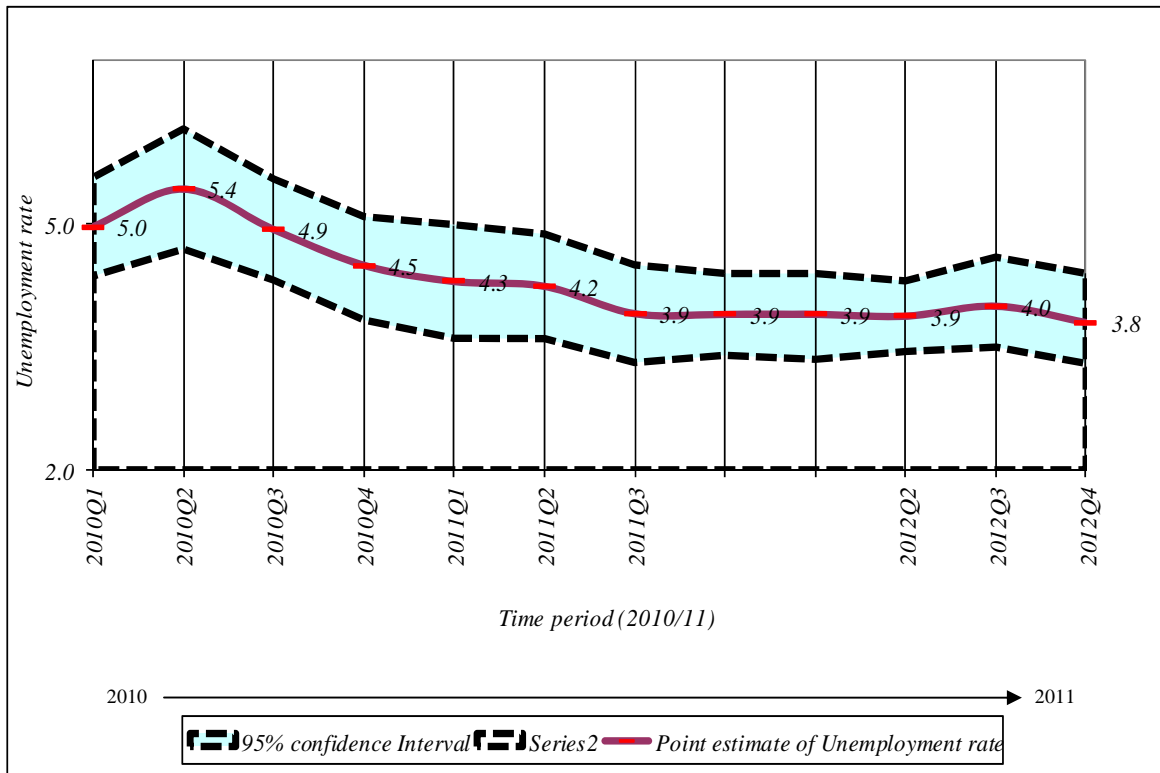
Estimated value *(of the unemployment rate)* \pm (standard error) * (1.96)

$$6.4 \pm (0.4) * (1.96)$$
$$(6.4 \pm 0.784)$$

This means, the 95 percent confidence interval on the quarterly unemployment rate could range from (5.6 to 7.2) . This implies that there is about 95 percent chance that the "true" unemployment rate lies within this interval. This range includes all the values range from 5.6 to 7.2 . When the comparison of this estimate is done between two quarters, if any of the value within the 95 percent confidence interval of one quarter overlaps with the confidence interval of the other , it means that the estimates of this two quarters ***are not significantly different.***

Therefore, in each quarterly labour force report, a separate table is given including approximate standard errors for some selected variables, so that users could understand this statistical scenario clearly.

Unemployment rates and it's 95% confidence intervals (2010 Q1 - 2012 Q4)



Note:

- Survey was not conducted in the fourth quarter 2011 & first quarter 2012 due to activities of population census.
- Excluding Northern Province

As seen in figure 2, it is very important to note that, there were no statistically significant difference between the unemployment rates reported in different time periods of 2010/2011, when sampling error was considered.

Change in survey schedule

Current survey concepts and methods are very similar to those introduced at the beginning of the survey in 1990. However, some changes have been made over the years to improve the accuracy and usefulness of the data.

Beginning in January 2006, some improvements were made to the labour force survey schedule in order to fulfill the requirements of it's users and also to provide additional information for the planning purposes. This revision was made focusing on literacy, household economic activities, and informal sector employment and under employment etc.

Note :

It is important to note that, all the data published here are the estimates based on a sample survey and these are subject to sampling errors. These sampling errors can be statistically evaluated from the survey results. Therefore, sampling error is normally measured in terms of the standard error of the particular variable. Standard error could be used to calculate the confidence limits with a prescribed accuracy where the true value of the estimates lies.

Further reliability of the estimates can be expressed in terms of Coefficient of Variation (CV). The CV is a relative measure of the sampling error and is calculated as sampling error divided by the expected value of the given characteristic.

In view of this, following table is given to show the estimates for some selected variables, it's standard error, CV and 95% Confidence interval.

It is also important to note that all the estimates we publish in this report are subject to sampling error and one should be cautious in the interpretation of results, especially with respect to the trends over time.

Estimate of Confidence Intervals for some selected characteristics

Year	Labour Force					Employed				
	No.	Standard error	C.V (%)	95% C.I.		No.	Standard error	C.V (%)	95% C.I.	
				Lower	Upper				Lower	Upper
2008 ¹	7,568,715	59,889	0.79	7,451,255	7,686,176	7,174,706	57,976	0.81	7,060,997	7,288,416
2008 ²	8,081,702	62,761	0.78	7,958,614	8,204,789	7,648,305	60,235	0.79	7,530,171	7,766,438
2009 ¹	8,073,598	62,298	0.77	7,951,419	8,195,778	7,602,344	60,103	0.79	7,484,471	7,720,218
2009 ²	7,572,363	60,302	0.80	7,454,091	7,690,634	7,139,511	58,209	0.82	7,025,344	7,253,678
2010 ¹	7,610,389	62,372	0.82	7,488,059	7,732,720	7,235,641	59,966	0.83	7,118,029	7,353,254
2010 ²	8,107,739	65,106	0.80	7,980,053	8,235,425	7,706,593	62,445	0.81	7,584,127	7,829,060
2011 ¹	7,737,745	74,127	0.96	7,592,325	7,883,165	7,429,794	71,804	0.97	7,288,931	7,570,657
2011 ²	8,236,243	76,997	0.93	8,085,205	8,387,282	7,894,439	73,982	0.94	7,749,316	8,039,563
2011 ³	8,554,730	77,778	0.91	8,402,174	8,707,286	8,196,927	74,775	0.91	8,050,261	8,343,593
2012 Q2 ¹	7,403,166	103,322	1.40	7,200,097	7,606,235	7,120,518	99,106	1.39	6,925,736	7,315,301
2012 Q2 ²	7,916,625	108,760	1.37	7,702,921	8,130,328	7,609,654	104,254	1.37	7,404,804	7,814,504
2012 Q2 ³	8,260,028	109,745	1.33	8,044,450	8,475,607	7,936,294	105,225	1.33	7,729,593	8,142,994
2012 Q3 ¹	7,601,830	115,632	1.52	7,374,636	7,829,024	7,304,238	111,910	1.53	7,084,358	7,524,119
2012 Q3 ²	8,071,455	118,315	1.47	7,839,037	8,303,873	7,746,663	113,995	1.47	7,522,732	7,970,594
2012 Q3 ³	8,418,106	120,956	1.44	8,180,556	8,655,656	8,074,808	116,316	1.44	7,846,372	8,303,244
2012 Q4 ¹	7,880,055	121,999	1.55	7,640,323	8,119,787	7,579,136	118,844	1.57	7,345,604	7,812,669
2012 Q4 ²	8,371,583	125,704	1.50	8,124,623	8,618,543	8,049,420	122,365	1.52	7,809,019	8,289,822
2012 Q4 ³	8,715,983	127,982	1.47	8,464,611	8,967,356	8,375,009	124,445	1.49	8,130,585	8,619,433

Year	Unemployed					Unemployment Rate				
	No.	Standard error	C.V (%)	95% C.I.		Rate	Standard error	C.V (%)	95% C.I.	
				Lower	Upper				Lower	Upper
2008 ¹	394,009	13,117	3.3	368,282	419,736	5.2	0.2	3.22	4.9	5.5
2008 ²	433,397	14,105	3.3	405,734	461,060	5.4	0.2	3.12	5.0	5.7
2009 ¹	471,254	14,863	3.2	442,104	500,404	5.8	0.2	3.04	5.5	6.2
2009 ²	432,852	14,260	3.3	404,884	460,820	5.7	0.2	3.18	5.4	6.1
2010 ¹	374,748	13,551	3.6	348,170	401,326	4.9	0.2	3.47	4.6	5.3
2010 ²	401,146	14,063	3.5	373,565	428,727	4.9	0.2	3.36	4.6	5.3
2011 ¹	307,951	15,227	4.9	278,079	337,822	4.0	0.2	4.79	3.6	4.4
2011 ²	341,804	16,436	4.8	309,563	374,045	4.2	0.2	4.63	3.8	4.5
2011 ³	357,803	16,564	4.6	325,314	390,292	4.2	0.2	4.46	3.8	4.5
2012 Q2 ¹	282,648	24,097	8.5	235,287	330,008	3.8	0.3	8.23	3.2	4.4
2012 Q2 ²	306,971	24,758	8.1	258,324	355,618	3.9	0.3	7.78	3.3	4.5
2012 Q2 ³	323,735	25,073	7.7	274,483	372,987	3.9	0.3	7.47	3.3	4.5
2012 Q3 ¹	297,591	22,445	7.5	253,491	341,691	3.9	0.3	7.30	3.4	4.5
2012 Q3 ²	324,791	23,713	7.3	278,210	371,373	4.0	0.3	7.03	3.5	4.6
2012 Q3 ³	343,298	24,137	7.0	295,894	390,702	4.1	0.3	6.76	3.5	4.6
2012 Q4 ¹	300,919	24,269	8.1	253,228	348,609	3.8	0.3	7.86	3.2	4.4
2012 Q4 ²	322,162	25,008	7.8	273,032	371,293	3.8	0.3	7.56	3.3	4.4
2012 Q4 ³	340,974	25,375	7.4	291,135	390,814	3.9	0.3	7.24	3.4	4.5

¹ - Excluding Northern & Eastern provinces

² - Including Eastern province but Excluding Northern province

³ - All the districts are included

⁴ - Excluding Mulathivu, Kilinochchi districts.

Alternative Estimates of Employment, Unemployment and Labour Force Characteristics

◆ Official employment, unemployment and labour force characteristics are estimated at the Sri Lanka Labour Force Survey, based on the internationally comparable concepts and definitions recommended by the ILO. However the validity of the concepts and definitions used at the survey is questioned very often in some forums, for the appropriateness of these concepts and definitions in the Sri Lankan context.

The concepts and definitions, which were found to be controversial are as below.

(1) Number of Hours of Work :

A person who work **at least one hour** during the reference week, is considered **employed**, under these definitions.

(2) Working Age Population :

All persons of **age 10 years and over** are considered to be in the working age.

(3) Employment Status :

All, a) Paid employees, (those who work for wages/salaries).

b) Employers (who have at least one paid employee under them).

c) Own account workers (who carry out the economic activity without having any paid employees).

d) Unpaid family workers (who make their contribution to the economic activities carried out by their own household, without wages/salaries).

The validity of the above concepts and definitions is raised due to the following reasons.

- (1) **Number of hours of Work** : Some point out that **one hour per week** is too low, to consider a person to be employed.
- (2) **Working age Population** : Some point out that persons in the age group 10-14 yrs. are too young to consider to be in the working age.
- (3) **Employment Status** : Some point out that 'unpaid family workers' may work in the family enterprise **without payment** because they have no other work, and so it is not appropriate to consider them as **employed**.

An attempt has been made to produce '**Alternative estimates of Employment, Unemployment and Labour Force Characteristics,**' by revising the original concepts and definitions so that the above issues are addressed as explained below.

The revisions made are,

- (1) **Number of Hours of Work** : Persons who work **20 hours or more per week only** are considered to be employed.
- (2) **Working Age Population** : Persons who are **over 15 yrs of age only** are considered to be in the working age.
- (3) **Unpaid Family Worker** : Unpaid family workers are **not** considered as employed. Those unpaid family workers who were reported to be seeking some other work are considered as **unemployed** and the rest of the unpaid family workers are considered as **economically inactive** (not in the labour force) so only, **a) paid employees b) employers and c) own account workers are considered to be employed.**

Following tables are based on the above alternative concepts and definitions.

TABLE 1 - LABOUR FORCE STATUS OF HOUSEHOLD POPULATION 15 YEARS & OVER (ALTERNATIVE ESTIMATES)

	HOUSEHOLD POPULATION (15 YEARS & OVER)	TOTAL LABOUR FORCE	LABOUR FORCE PARTICI: RATE(%)	LABOUR FORCE				NOT IN LABOUR FORCE NUMBER
				EMPLOYED		UNEMPLOYED		
				NUMBER	RATE (% TO TOTAL LABOUR FORCE)	NUMBER	RATE (% TO TOTAL LABOUR FORCE)	
2005 ³	13,630,354	6,565,951	48.2	5,964,493	90.8	601,458	9.2	7,064,403
2006 ¹	13,261,409	6,467,138	48.8	5,975,069	92.4	492,069	7.6	6,794,271
2007 ¹	13,459,252	6,425,260	47.7	5,979,061	93.1	446,199	6.9	7,033,992
2008 ¹	13,557,956	6,393,192	47.2	5,999,538	93.8	393,654	6.2	7,164,764
2008 ²	14,626,581	6,859,040	46.9	6,425,997	93.7	433,042	6.3	7,767,541
2009 ¹	13,853,482	6,380,349	46.1	5,947,497	93.2	432,852	6.8	7,473,133
2009 ²	14,876,264	6,836,598	46.0	6,365,344	93.1	471,254	6.9	8,039,665
2010 ¹	14,115,065	6,443,474	45.6	6,069,301	94.2	374,173	5.8	7,671,592
2010 ²	15,166,285	6,892,444	45.4	6,492,109	94.2	400,335	5.8	8,273,841
2011 ¹	14,312,573	6,442,674	45.0	6,135,055	95.2	307,618	4.8	7,869,900
2011 ²	15,396,894	6,905,775	44.9	6,564,303	95.1	341,472	4.9	8,491,119
2011 ³	16,122,111	7,196,558	44.6	6,839,087	95.0	357,471	5.0	8,925,553
2012 Q2 ¹	14,173,871	6,514,276	46.0	6,231,628	95.7	282,648	4.3	7,659,595
2012 Q2 ²	15,237,570	6,984,328	45.8	6,677,357	95.6	306,971	4.4	8,253,241
2012 Q2 ³	16,022,402	7,306,270	45.6	6,982,535	95.6	323,735	4.4	8,716,132
2012 Q3 ¹	14,195,085	6,613,435	46.6	6,315,844	95.5	297,591	4.5	7,581,650
2012 Q3 ²	15,214,961	7,033,818	46.2	6,709,027	95.4	324,791	4.6	8,181,142
2012 Q3 ³	15,961,831	7,345,180	46.0	7,001,882	95.3	343,298	4.7	8,616,650
2012 Q4 ¹	14,419,952	6,825,905	47.3	6,524,987	95.6	300,919	4.4	7,594,046
2012 Q4 ²	15,481,003	7,287,331	47.1	6,965,169	95.6	322,162	4.4	8,193,672
2012 Q4 ³	16,259,623	7,602,052	46.8	7,261,077	95.5	340,974	4.5	8,657,572

TABLE 2 - HISTORICAL TABLE OF NUMBER AND RATE OF UNEMPLOYMENT BY AGE (ALTERNATIVE ESTIMATES)

YEAR	AGE GROUP											
	TOTAL		15 - 19		20 - 24		25 - 29		30 - 39		40 & ABOVE	
	NO.	RATE	NO.	RATE	NO.	RATE	NO.	RATE	NO.	RATE	NO.	RATE
2005 ³	601,458	9.2	122,670	39.7	268,331	28.4	99,649	11.3	70,764	4.4	40,044	1.4
2006 ¹	492,069	7.6	86,180	29.7	193,481	24.0	105,966	12.5	58,443	3.8	47,999	1.6
2007 ¹	446,199	6.9	69,856	27.7	183,617	24.0	87,993	10.7	58,252	3.8	46,480	1.5
2008 ¹	393,654	6.2	62,422	27.4	151,228	20.4	82,204	10.4	53,900	3.5	43,899	1.4
2008 ²	433,042	6.3	68,487	27.1	166,409	20.8	93,202	10.9	58,838	3.6	46,107	1.4
2009 ¹	432,852	6.8	63,376	28.0	160,563	24.5	90,834	11.7	65,666	4.2	52,413	1.7
2009 ²	471,254	6.9	68,447	27.3	176,801	24.9	100,508	11.9	70,988	4.2	54,511	1.6
2010 ¹	374,173	5.8	55,963	27.6	142,343	22.4	78,615	10.5	56,056	3.6	41,196	1.2
2010 ²	400,335	5.8	59,339	26.5	154,788	22.5	84,777	10.5	59,041	3.6	42,390	1.2
2011 ¹	307,618	4.8	40,219	21.4	131,450	20.5	61,208	8.2	48,804	3.1	25,937	0.8
2011 ²	341,472	4.9	43,465	20.9	145,780	21.0	70,134	8.7	53,264	3.2	28,828	0.8
2011 ³	357,471	5.0	45,900	21.0	151,882	20.7	73,545	8.7	55,880	3.2	30,263	0.8
2012 Q2 ¹	282,648	4.3	40,041	24.9	121,542	20.1	57,296	7.8	43,502	2.6	20,265	0.6
2012 Q2 ²	306,971	4.4	41,614	23.6	134,320	20.7	63,268	7.9	46,491	2.5	21,278	0.6
2012 Q2 ³	323,735	4.4	43,011	23.2	140,949	20.4	70,403	8.3	47,950	2.5	21,422	0.6
2012 Q3 ¹	297,592	4.5	46,526	24.1	95,590	16.9	59,135	8.2	53,697	3.2	42,644	1.2
2012 Q3 ²	324,792	4.6	48,042	22.9	109,621	17.8	66,233	8.4	55,504	3.2	45,392	1.2
2012 Q3 ³	343,298	4.7	49,933	22.9	118,943	18.2	69,407	8.4	59,415	3.2	45,600	1.2
2012 Q4 ¹	300,919	4.4	45,747	25.2	128,483	18.9	43,511	5.4	44,718	2.7	38,461	1.1
2012 Q4 ²	322,162	4.4	48,285	24.8	140,259	19.5	44,854	5.2	48,903	2.7	39,861	1.1
2012 Q4 ³	340,974	4.5	50,124	24.6	149,769	19.7	49,594	5.4	50,258	2.7	41,229	1.1

¹ - Excluding Northern & Eastern provinces

³ - All the districts are included

² - Including Eastern province but Excluding Northern province

⁴ - Excluding Mulathivu, Kilinochchi districts.

Table 3 - Currently Employed persons by Industry group (No. and percentage) (Based on ISIC Third Revision) - (Alternative estimates)

Year			Industry group													
	Total		1	2	3	4	5	6	7	8	9	10	11	12	13	14
2005 ³	No.	5,971,029	1,573,306	1,147,255	476,851	739,850	108,424	422,920	204,139	465,608	245,956	118,065	105,175	47,645	253,367	62,468
	%	100.0	26.3	19.2	8.0	12.4	1.8	7.1	3.4	7.8	4.1	2.0	1.8	0.8	4.2	1.0
2006 ¹	No.	5,978,575	1,570,682	1,221,566	492,116	822,922	111,890	416,188	214,276	397,926	254,378	105,956	110,924	78,341	160,429	20,981
	%	100.0	26.3	20.4	8.2	13.8	1.9	7.0	3.6	6.7	4.3	1.8	1.9	1.3	2.7	0.4
2007 ¹	No.	5,979,061	1,543,596	1,182,348	507,060	807,657	100,638	441,290	209,288	428,978	242,713	112,778	94,647	82,955	202,406	22,706
	%	100.0	25.8	19.8	8.5	13.5	1.7	7.4	3.5	7.2	4.1	1.9	1.6	1.4	3.4	0.4
2008 ¹	No.	5,999,538	1,609,009	1,205,793	496,771	790,533	90,257	403,186	228,957	456,435	268,121	106,630	114,215	80,651	136,037	12,944
	%	100.0	26.8	20.1	8.3	13.2	1.5	6.7	3.8	7.6	4.5	1.8	1.9	1.3	2.3	0.2
2008 ²	No.	6,425,997	1,732,266	1,257,331	550,875	842,616	95,773	423,760	234,407	505,254	293,699	116,026	126,616	81,347	152,593	13,436
	%	100.0	27.0	19.6	8.6	13.1	1.5	6.6	3.6	7.9	4.6	1.8	2.0	1.3	2.4	0.2
2009 ¹	No.	5,947,497	1,564,800	1,154,758	484,131	775,679	114,969	401,454	209,011	478,742	281,272	124,932	91,098	92,713	170,430	3,507
	%	100.0	26.3	19.4	8.1	13.0	1.9	6.7	3.5	8.0	4.7	2.1	1.5	1.6	2.9	0.1
2009 ²	No.	6,365,344	1,699,505	1,196,383	522,005	830,954	122,469	426,494	214,438	515,695	316,534	132,843	107,364	92,949	184,026	3,685
	%	100.0	26.7	18.8	8.2	13.1	1.9	6.7	3.4	8.1	5.0	2.1	1.7	1.5	2.9	0.1
2010 ¹	No.	6,069,301	1,609,380	1,146,333	467,767	843,248	118,274	445,079	244,202	483,863	250,325	100,698	108,915	80,146	170,312	759
	%	100.0	26.5	18.9	7.7	13.9	1.9	7.3	4.0	8.0	4.1	1.7	1.8	1.3	2.8	0.0
2010 ²	No.	6,492,109	1,750,513	1,185,767	506,939	900,499	124,378	465,455	252,609	529,555	281,793	111,388	117,761	80,146	184,222	1,087
	%	100.0	27.0	18.3	7.8	13.9	1.9	7.2	3.9	8.2	4.3	1.7	1.8	1.2	2.8	0.0
2011 ¹	No.	6,135,055	1,631,114	1,187,627	470,728	832,415	117,363	441,063	257,603	490,175	243,738	118,677	89,683	71,780	179,534	3,555
	%	100.0	26.6	19.4	7.7	13.6	1.9	7.2	4.2	8.0	4.0	1.9	1.5	1.2	2.9	0.1
2011 ²	No.	6,564,303	1,770,260	1,221,719	503,249	887,798	121,178	467,522	268,813	540,040	279,425	125,632	95,853	72,785	205,779	4,250
	%	100.0	27.0	18.6	7.7	13.5	1.8	7.1	4.1	8.2	4.3	1.9	1.5	1.1	3.1	0.1
2011 ³	No.	6,839,087	1,860,573	1,242,535	542,542	924,617	124,349	482,838	274,300	557,402	300,064	131,719	106,044	74,168	213,454	4,481
	%	100.0	27.2	18.2	7.9	13.5	1.8	7.1	4.0	8.2	4.4	1.9	1.6	1.1	3.1	0.1
2012 Q2 ¹	No.	6,231,628	1,577,286	1,238,221	590,602	886,106	109,029	453,434	221,167	407,426	281,015	131,100	122,944	118,268	95,029	..
	%	100.0	25.3	19.9	9.5	14.2	1.7	7.3	3.5	6.5	4.5	2.1	2.0	1.9	1.5	..
2012 Q2 ²	No.	6,677,357	1,713,827	1,276,382	631,466	957,746	116,253	485,797	234,178	459,389	306,218	144,630	131,396	121,015	99,061	..
	%	100.0	25.7	19.1	9.5	14.3	1.7	7.3	3.5	6.9	4.6	2.2	2.0	1.8	1.5	..
2012 Q2 ³	No.	6,982,535	1,795,776	1,307,163	672,958	1,007,364	117,475	502,240	246,284	479,003	335,858	154,542	137,557	125,351	100,812	152
	%	100.0	25.7	18.7	9.6	14.4	1.7	7.2	3.5	6.9	4.8	2.2	2.0	1.8	1.4	0.0
2012 Q3 ¹	No.	7,001,882	1,806,274	1,259,642	628,295	997,053	130,710	536,360	306,576	578,310	302,802	113,614	145,721	85,824	110,701	..
	%	100.0	25.8	18.0	9.0	14.2	1.9	7.7	4.4	8.3	4.3	1.6	2.1	1.2	1.6	..
2012 Q3 ²	No.	6,709,027	1,723,433	1,231,762	584,652	958,159	130,169	515,815	295,322	559,413	278,703	104,473	138,250	81,320	107,556	..
	%	100.0	25.7	18.4	8.7	14.3	1.9	7.7	4.4	8.3	4.2	1.6	2.1	1.2	1.6	..
2012 Q3 ³	No.	6,315,844	1,611,444	1,185,154	543,472	879,920	128,555	486,094	285,034	520,535	256,519	99,274	135,513	81,320	103,012	..
	%	100.0	25.5	18.8	8.6	13.9	2.0	7.7	4.5	8.2	4.1	1.6	2.1	1.3	1.6	..
2012 Q4 ¹	No.	6,524,987	1,661,805	1,299,390	570,751	917,027	102,838	449,932	254,586	584,682	263,839	111,636	141,767	62,652	104,082	..
	%	100.0	25.5	19.9	8.7	14.1	1.6	6.9	3.9	9.0	4.0	1.7	2.2	1.0	1.6	..
2012 Q4 ²	No.	6,965,169	1,830,901	1,335,240	614,308	987,843	107,622	478,931	259,301	614,868	293,805	119,975	151,501	62,652	108,222	..
	%	100.0	26.3	19.2	8.8	14.2	1.5	6.9	3.7	8.8	4.2	1.7	2.2	0.9	1.6	..
2012 Q4 ³	No.	7,261,077	1,925,150	1,365,360	648,558	1,025,983	109,856	500,475	273,885	633,839	314,137	124,812	161,137	65,432	111,090	1365
	%	100.0	26.5	18.8	8.9	14.1	1.5	6.9	3.8	8.7	4.3	1.7	2.2	0.9	1.5	0.0

Industry group

1 Agriculture Forestry and Fishery (A,B)

2 Manufacturing (D)

3 Construction, Mining & Quarrying, Electricity, Gas and Water supply (C,E,F)

4 Wholesale and Retail Trade, Repair of Motor Vehicles, Motorcycles and Personal and Household Goods (G)

5 Hotels and Restaurants (H)

6 Transport, Storage and Communication (I)

7 Financial Intermediation and Real Estate, Renting and Business Activities (J,K)

8 Public Administration and Defence, Compulsory Social Security (L)

9 Education (M)

10 Health and Social work (N)

11 Other Community, Social and Personal Service Activities Extra Territorial Organizations & bodies (O,Q)

12 Private Households with Employed Persons (P)

13 Miscellaneous Labour work

14 Industries not adequately described

Note: The tabulation groups based on ISIC (Rev.3) are indicated as A,B,C,.....Q. Due to the limitations on reliability (based on CV), some of these groups have been combined.

¹ - Excluding Northern & Eastern provinces² - Including Eastern province but Excluding Northern province³ - All the districts are included⁴ - Excluding Mulathivu, Kilinochchi districts.